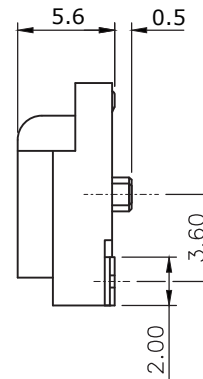


*SEE TABLE



SPECIFICATION:

1. ELECTRICAL

- 1.1 Current Rating: 0.5A per pin
- 1.2 Voltage Rating: 50V DC
- 1.3 Contact Resistance: 55mΩ Max
- 1.4 Insulation Resistance: 500MΩ Min
- 1.5 Dielectric Withstanding Voltage: 300VAC

2. MECHANICAL

- 2.1 Durability: 100 Cycle
- 2.2 Insertion Force: 2.3Kgf max.
- 2.3 Extraction Force: 2.3Kgf max.

3. ENVIRONMENTAL

- 3.1 Operating temperature range: -40° ~ +85°
- 3.2 Storage temperature range: -40° ~ +85°

4. SOLDER ABILITY

- 4.1 Recommended IR Reflow Temperature: 260° ± 10Sec

3	HOLDDOWN	Brass C2680, Tin Plated
2	CONTACT	Phosphor Bronze C5210, Contact Area: Gold Flash Over Nickel
1	HOUSING	LCP UL94V-0, Black
NO.	PART NAME	DESCRIPTION

RoHS Compliant

TOLERANCES ARE

MORETHANALL
PCB CONNECTORS
Cable ASSEMBLIES

DRAWING BY CY

CHECKED BY GENIUS

UNIT / mm

SCALE 1 : 1

DATE

SIZE A4

X, ±
.X ± 0.50
.XX ± 0.25
.XXX ± 0.12
ANG ±

PJECTION

照片框

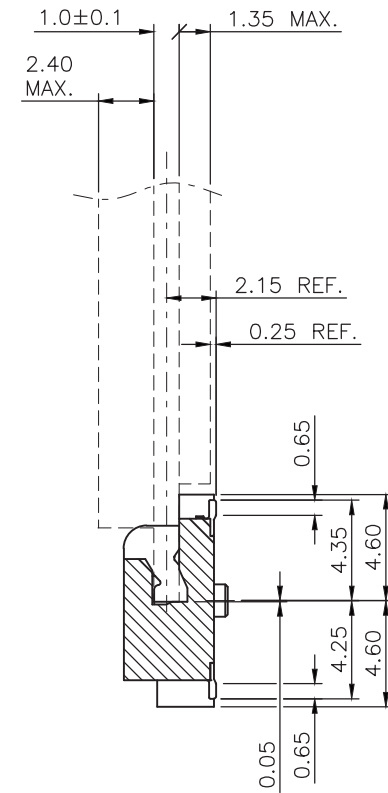
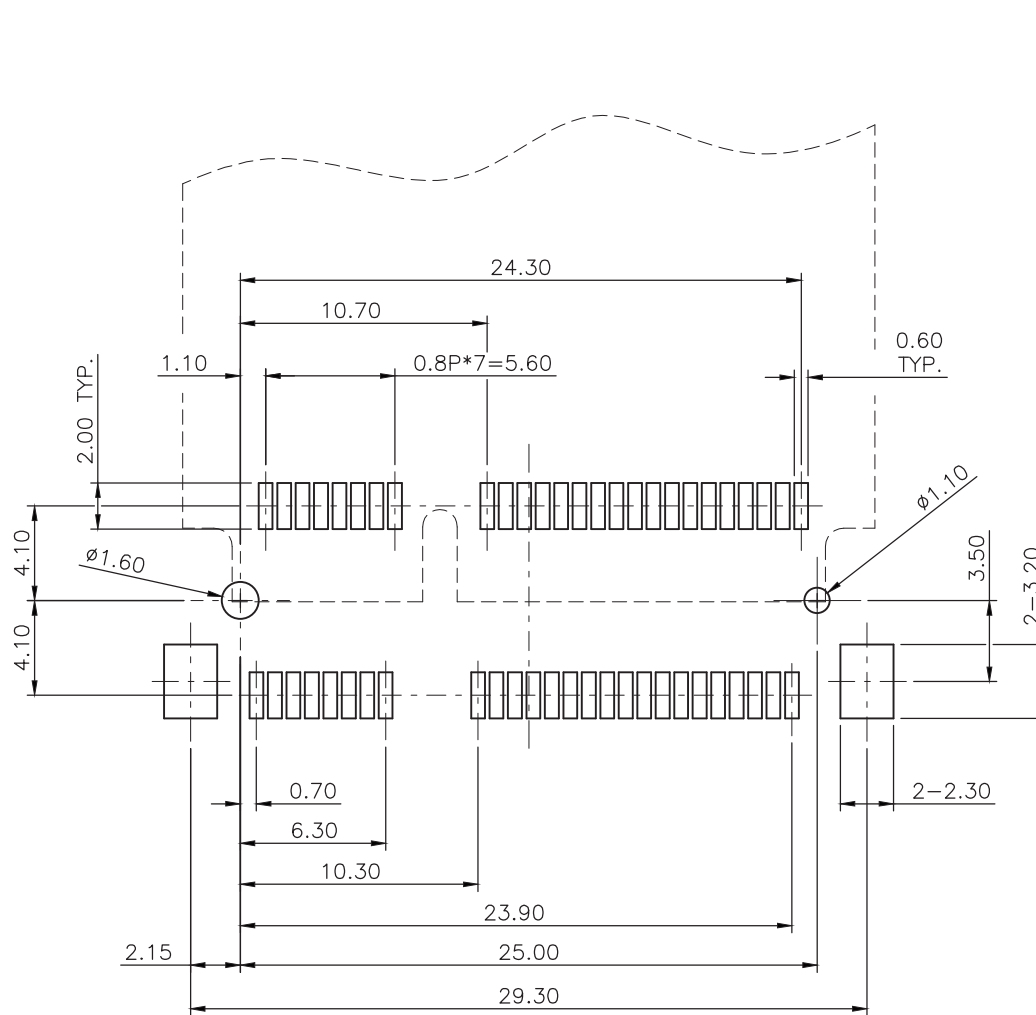
ORDER INFORMATION

MPCI-W56-052-LF
SERIES | LEADFREE
52 WAY
HIGH 5.6mm
90°SMT

煜倫股份有限公司

www.morethanall.com

DESCRIPTION: Mini PCI Express Socket H:4.0mm



RECOMMEND PCB LAYOUT, TOP VIEW

----- IS CARD
 _____ IS PAD LAYOUT

RoHS Compliant

TOLERANCES ARE

MORETHANALL
 PCB CONNECTORS
 Cable ASSEMBLIES

煜倫股份有限公司

www.morethanall.com

DRAWING BY CY

CHECKED BY GENIUS

UNIT / mm SCALE 1 : 1

DATE

SIZE A4

X, ±
 .X ± 0.50
 .XX ± 0.25
 .XXX ± 0.12
 ANG ±

PJECTION

照片框

ORDER INFORMATION

MPCI-W56-052-LF

SERIES | LEADFREE
 52 WAY
 HIGH 5.6mm
 90°SMT

DESCRIPTION: Mini PCI Express Socket H:4.0mm