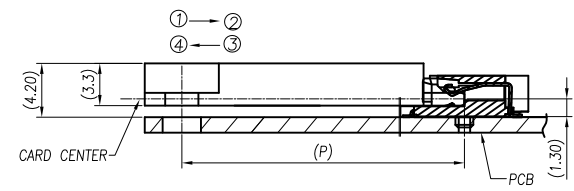
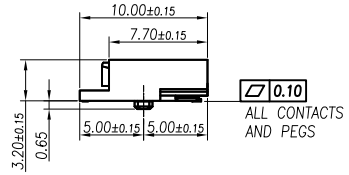


RECOMMEND PCB LAYOUT (THICKNESS 0.8mm Min.)  
(TOLERANCE: ±0.03)



MATING: ① INSERTING(0°) → ② FIXED  
UNMATING: ③ UNFIXED → ④ WITHDRAWING(0°)

- NOTES:
- MATERIAL:  
HOUSING: THERMOPLASTIC, BLACK COLOR, FLAME RESISTANCE UL94-V0.  
CONTACTS: COPPER ALLOY, THICKNESS 0.20mm.  
SOLDER PEGS: COPPER ALLOY, THICKNESS 0.2mm.
  - MSL LEVEL:  
MSL(MOISTURE SENSITIVITY LEVELS)=1
  - FINISHED:  
CONTACTS: GOLD PLATING ON CONTACT AREA AND 50~120u" MATTE TIN PLATING ON SOLDER AREA.  
30~120u" NICKEL UNDER-PLATING OVER ALL.  
SOLDER PEGS: 50~120u" MATTE TIN PLATING OVER ALL.  
50u"~120u" NICKEL UNDER-PLATING OVER ALL.

RoHS Compliant

TOLERANCES ARE



DRAWING BY CY

CHECKED BY GENIUS

UNIT / mm SCALE 1 : 1

DATE

SIZE A4

X, ±  
.X ± 0.35  
.XX ± 0.25  
.XXX ±  
ANG ±

PJECTION

照片框

ORDER INFORMATION

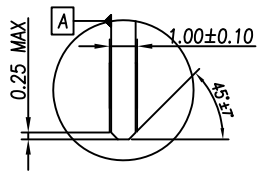
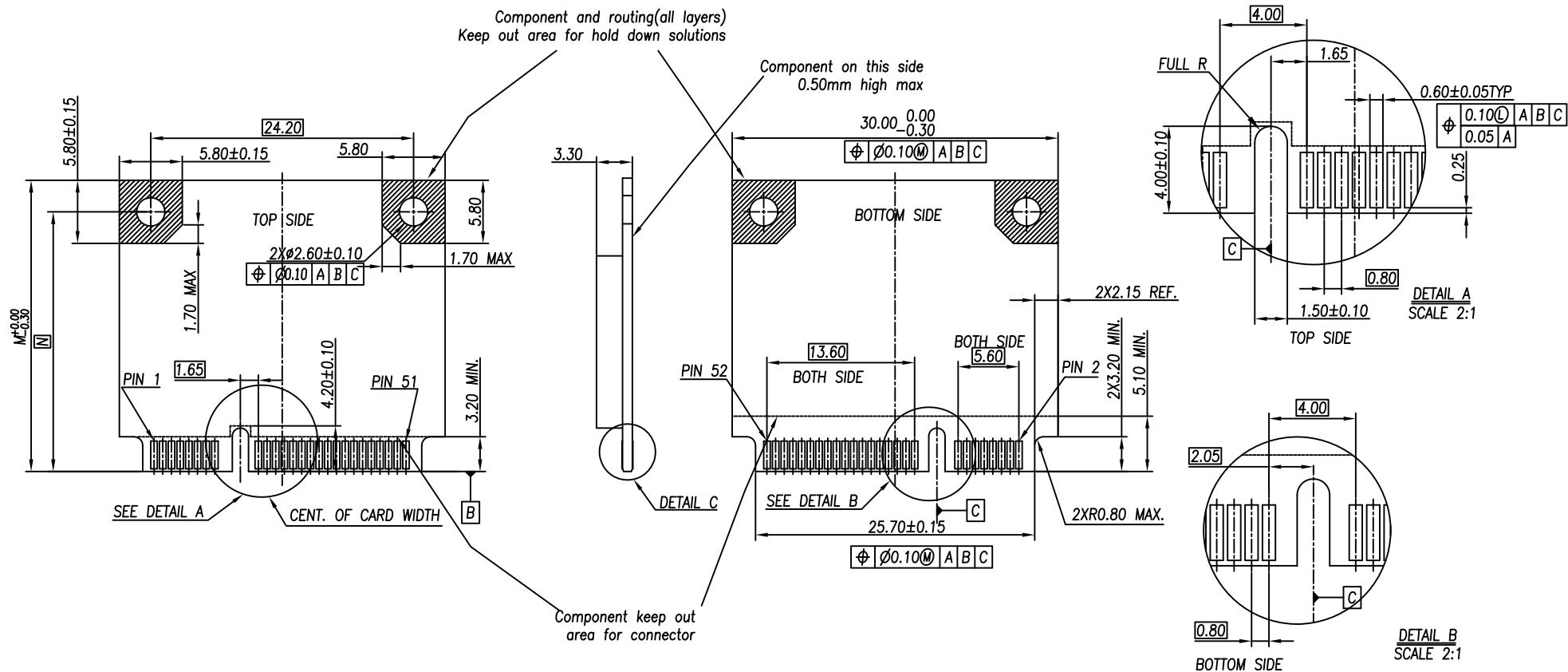
MPCI-W32-052-LF

SERIES | LEADFREE  
52 WAY  
HIGH 3.2mm  
90°SMT

煜倫股份有限公司

www.morethanall.com

DESCRIPTION: MINI PCI EXPRESS 3.2H



DETAIL C  
SCALE 2:1

	M	N	P
FULL-MINI CARD	50.95	48.05	49.70
HALF-MINI CARD	26.8	23.9	25.55

RoHS Compliant

TOLERANCES ARE

**MORETHANALL**  
PCB CONNECTORS  
Cable ASSEMBLIES

DRAWING BY CY  
CHECKED BY GENIUS  
UNIT / mm SCALE 1:1  
DATE  
SIZE A4

X, ±  
.X ± 0.35  
.XX ± 0.25  
.XXX ±  
ANG ±

照片框

ORDER INFORMATION

MPCI-W32-052-LF  
SERIES | LEADFREE  
52 WAY  
HIGH 3.2mm  
90°SMT

www.morethanall.com

PJECTION

DESCRIPTION: MINI PCI EXPRESS 3.2H