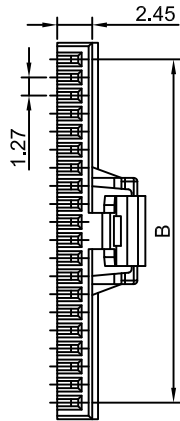
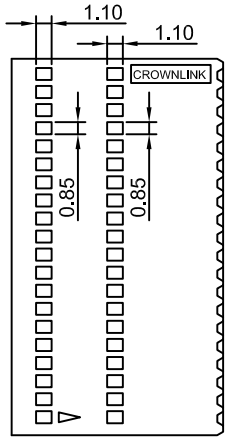
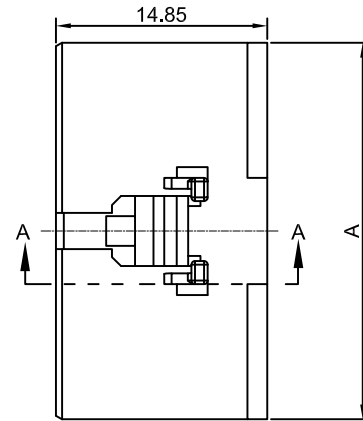
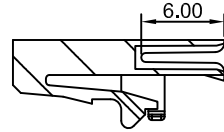


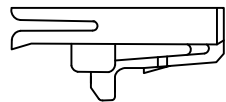
08-30 PIN



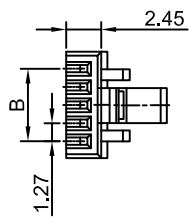
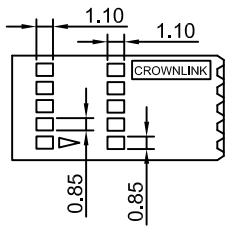
SECTION A-A



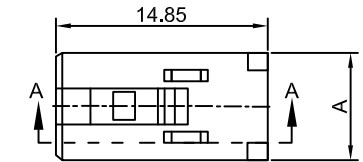
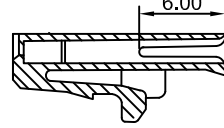
- ◆ FOR 2807 SERIES CONNECTOR
- ◆ SPECIFICATIONS
  - VOLTAGE RATING: 250 VAC RMS.
  - CURRENT RATING: 2A
  - INSULATION RESISTANCE: 500MΩ MIN
- ◆ ENVIRONMENTAL
  - TEMPERATURE RANGE:-25°C~125°C



04-07 PIN



SECTION A-A



◆ SPECIFIED TOLERANCE

PIN NO.	A	B	PIN NO.	A	B	PIN NO.	A	B
04	6.15	3.81	13	17.58	15.24	22	29.01	26.67
05	7.42	5.08	14	18.85	16.51	23	30.28	27.94
06	8.69	6.35	15	20.12	17.78	24	31.55	29.21
07	9.96	7.62	16	21.39	19.05	25	32.82	30.48
08	11.23	8.89	17	22.66	20.32	26	34.09	31.75
09	12.50	10.16	18	23.93	21.59	27	35.36	33.02
10	13.77	11.43	19	25.20	22.86	28	36.63	34.29
11	15.04	12.70	20	26.47	24.13	29	37.90	35.56
12	16.31	13.97	21	27.74	25.40	30	39.17	36.83



煜倫股份有限公司

www.morethanall.com

RoHS Compliant

DRAWING BY CY  
 CHECKED BY GENIUS  
 UNIT / mm SCALE 1 : 1  
 DATE  
 SIZE A4

TOLERANCES ARE

X. ±  
 .X ±  
 .XX ±  
 .XXX ±  
 ANG ±

PPOJECTION

照片框

ORDER INFORMATION

MOD50F-HL-1Xxx-LF  
 SERIES | LEADFREE  
 | 1X04:04 WAY  
 | 1X30:30 WAY  
 LOCK  
 HOUSING

DESCRIPTION: 1.27mm PITCH HOUSING FOR FFC/FPC