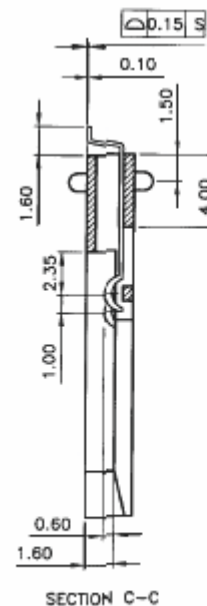
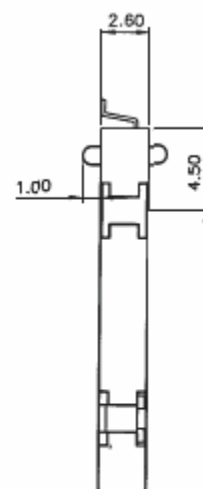
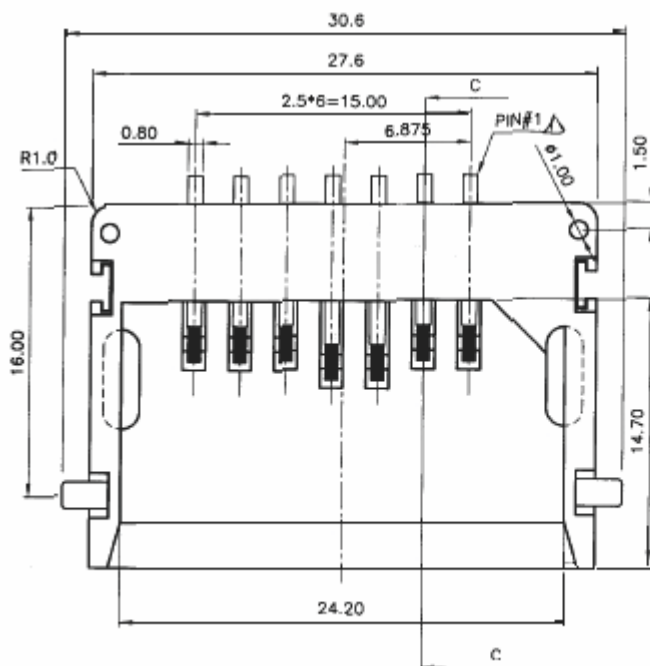


RECOMMENDED P.C.B LAYOUT (TOP VIEW)  
TOLERANCES:  $\pm 0.10\text{mm}$



**SPECIFICATION**

**MATERIAL**

Insulator: LCP, rated UL94V-0

Contacts: Phosphor Bronze

Boardlock: Copper alloy

**CONTACT PLATING**

Contact area: see part no.

Solder tail area: 100u" tin plating over 40u" nickel

**ELECTRICAL**

Current rating: 1 A max.

Contact resistance: 100 mohms max.

Insulation resistance: 1000 Mohms min.

**MECHANICAL**

Mating cycle: 5000 cycles min

Operating temperature:  $-40^{\circ}\text{C}$  min/ $+85^{\circ}\text{C}$  max

RoHS Compliant

TOLERANCES ARE

**MORETHANALL**  
PCB CONNECTORS  
Cable ASSEMBLIES

煜倫股份有限公司

www.morethanall.com

DRAWING BY CY

CHECKED BY GENIUS

UNIT / mm SCALE 1 : 1

DATE

SIZE A4

X,  $\pm$

.X,  $\pm$

.XX,  $\pm$

.XXX,  $\pm$

ANG,  $\pm$

PPOJECTION

照片框

**ORDER INFORMATION**

MMC-W25XA-07-LF

SERIES LEADFREE  
07 WAY  
SWITCH CLOSE  
NON PUSH  
POST TO POST 25.6mm  
90°SMT

DESCRIPTION: