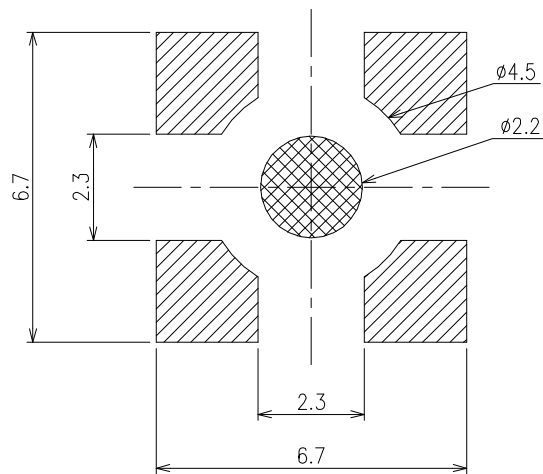
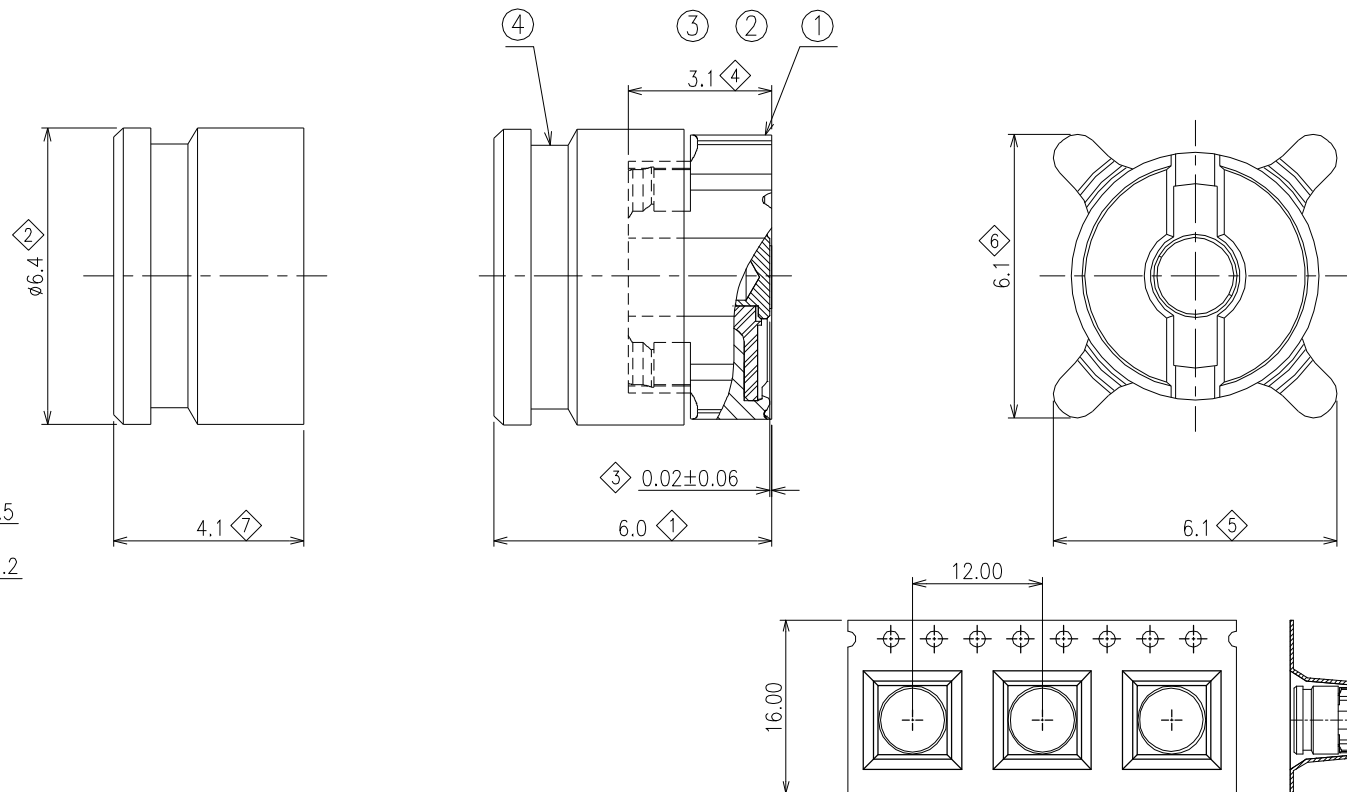


NOTES:

1. MECHANICAL SPEC:
 - 1.1 COUPLING METHOD: SNAP-ON COUPLING.
 - 1.2 DURABILITY: 500 CYCLES.
 - 1.3 ENGAGEMENT FORCE: N/A.
 - 1.4 SEPARATION FORCE: N/A.
2. ELECTRICAL SPEC:
 - 2.1 IMPEDANCE: 50 ohm.
 - 2.2 FREQUENCY RANGE: DC~12.4GHz.
 - 2.3 OUTER CONTACT RESISTANCE: 2.5mΩ.
 - 2.4 CENTER CONTACT RESISTANCE: 4.0mΩ.
 - 2.5 WITHSTANDING VOLTAGE: 1000V.
 - 2.6 INSULATION RESISTANCE: 1000MΩ.
3. ENVIRONMENTAL SPEC:
 - 3.1 OPERATING TEMPERATURE: -65°C~+165°C.



RECOMMEND SMT SOLDERING PAD



COMPONENT LOAD PER 13" REEL: 800pcs.

4	CAP	PTFE	NONE	1
3	PIN CONTACT	BRASS	GOLD 0.13um OVER NICKEL	1
2	INSULATOR	LCP&PTFE	NONE	1
1	BODY	BRASS	GOLD FLASH OVER NICKEL	1
ITEM	NAME	SPEC.	FINISH	Q'TY

RoHS Compliant

TOLERANCES ARE

MORETHANALL
PCB CONNECTORS
Cable ASSEMBLIES

煜倫股份有限公司

www.morethanall.com

DRAWING BY CY

CHECKED BY GENIUS

UNIT / mm SCALE 1 : 1

DATE

SIZE A4

X, ±
.X ± 0.20
.XX ± 0.10
.XXX ± 0.05
ANG ± 2°

PPOJECTION

照片框

ORDER INFORMATION

MMBX-JVCR-50-LF

SERIES | | | | LEADFREE
50 OHM
REEL
COVER
180°SMT
JACK

DESCRIPTION: MMBX JACK FOR SMT