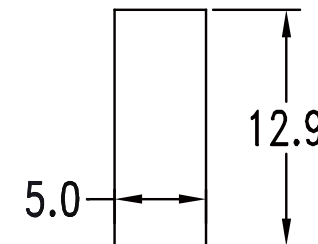
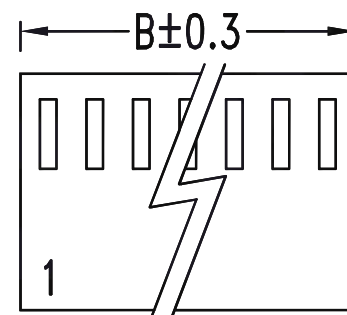
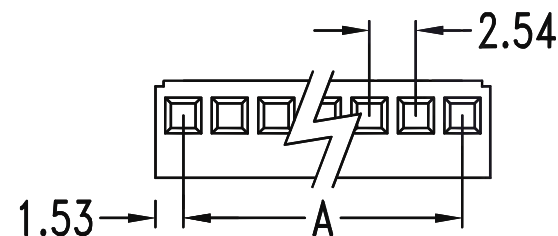


Features:

- 2 ~ 20 circuits available
- Molded friction lock
- Optional Polarization or locking ramp version

Specifications:

- Current rating: 3A AC, DC
- Voltage rating: 250V AC, DC
- Insulation resistance: 1000MΩ min.
- Dielectric withstanding voltage: 1500V AC/minute
- Ambient temperature range: -40°C ~ 105°C
(Including temperature rise)



Dimensional Information (mm)

Circuits	Dim. A	Dim. B	Circuits	Dim. A	Dim. B	Circuits	Dim. A	Dim. B	Circuits	Dim. A	Dim. B	Circuits	Dim. A	Dim. B
2	2.54	5.60	6	12.70	15.76	10	22.86	25.92	14	33.02	36.08	18	43.18	46.24
3	5.08	8.14	7	15.24	18.30	11	25.40	28.46	15	35.56	38.62	19	45.72	48.78
4	7.62	10.68	8	17.78	20.84	12	27.94	31.00	16	38.10	41.16	20	48.26	51.32
5	10.16	13.22	9	20.32	23.38	13	30.48	33.54	17	40.64	43.70			

RoHS Compliant

TOLERANCES ARE

MORETHANALL
PCB CONNECTORS
Cable ASSEMBLIES
煜倫股份有限公司

DRAWING BY CY

CHECKED BY GENIUS

UNIT / mm

SCALE 1:1

DATE

SIZE A4

PPOJECTION

X, ±
.X ± 0.40
.XX ± 0.25
.XXX ± 0.08
ANG ± 1°

照片框

ORDER INFORMATION

MKL-HWHXRP-xx-LF
SERIES | LEADFREE
| 02~20 WAY
| W/O LOCKING RAMP
| W/O POLARIZING RIB
| WHITE
HOUSING

DESCRIPTION:

www.morethanall.com