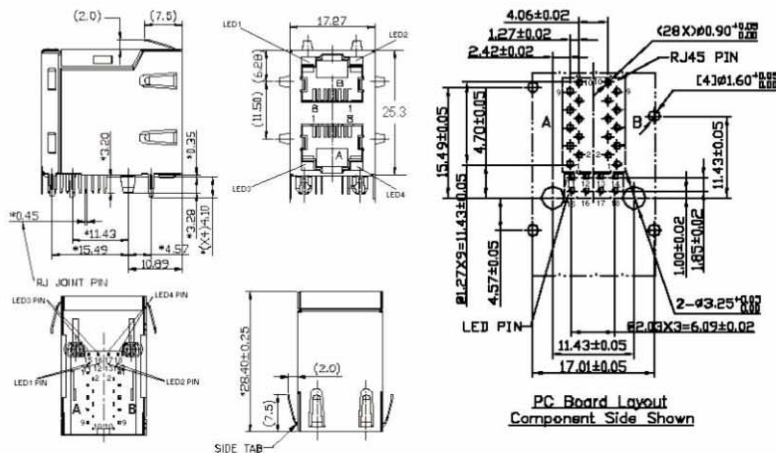
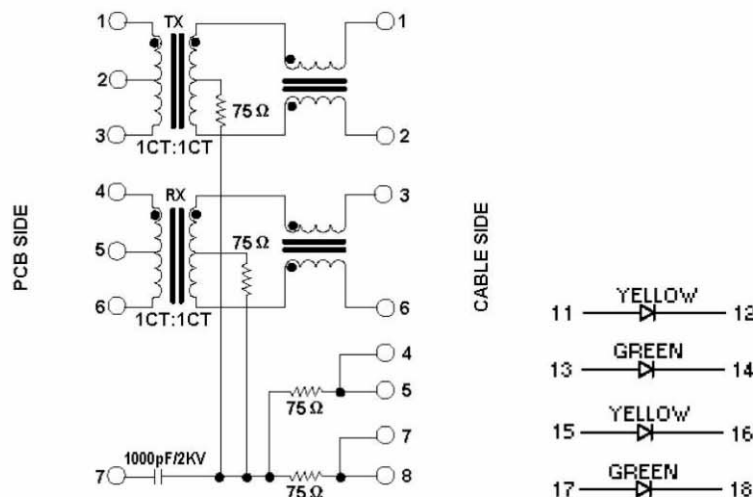


Mechanicals Dimensions



Dimensions:mm Tolerances: .X= ±0.38, .XX = ±0.25

Schematics



ELECTRICAL SPECIFICATIONS@25°C:

Turn Ratio(±5%): TX&RX=1CT:1CT

Insertion Loss (dB MAX):-1.0dB (1-100MHZ)

Return Loss (dB MIN):

-18dB(1-30MHZ) , -16dB(30-60MHZ), -12dB(60-80MHZ)

Cross talk (dB MIN):-30dB (1-100MHZ)

CMR(dB MIN): -30dB (1-100MHZ)

HIPOT TEST: 1500Vrms/60Sec.

OCL(100KHZ/0.1V@8mA):350uH MIN.

OPERATING TEMPERATURE:0°C ~+70°C

STORAGE TEMPERATURE:-40°C ~+85°C

RoHS compliance:YES

RoHS Compliant

TOLERANCES ARE

MORETHANALL
PCB CONNECTORS
Cable ASSEMBLIES

DRAWING BY CY

CHECKED BY GENIUS

UNIT / mm

SCALE 1 : 1

DATE

SIZE A4

PJECTION

X, ±
.X ±
.XX ±
.XXX ±
ANG ±

照片框

ORDER INFORMATION

MJF25T25ULB1-KF06A4YG-0808

SERIES

8P8C
LEFT LED / RIGHT LED
YELLOW / GREEN
FRONT TAB 4.57mm
BLACK GOLD 06u"
FULL SPRING

煜倫股份有限公司

www.morethanall.com

DESCRIPTION: