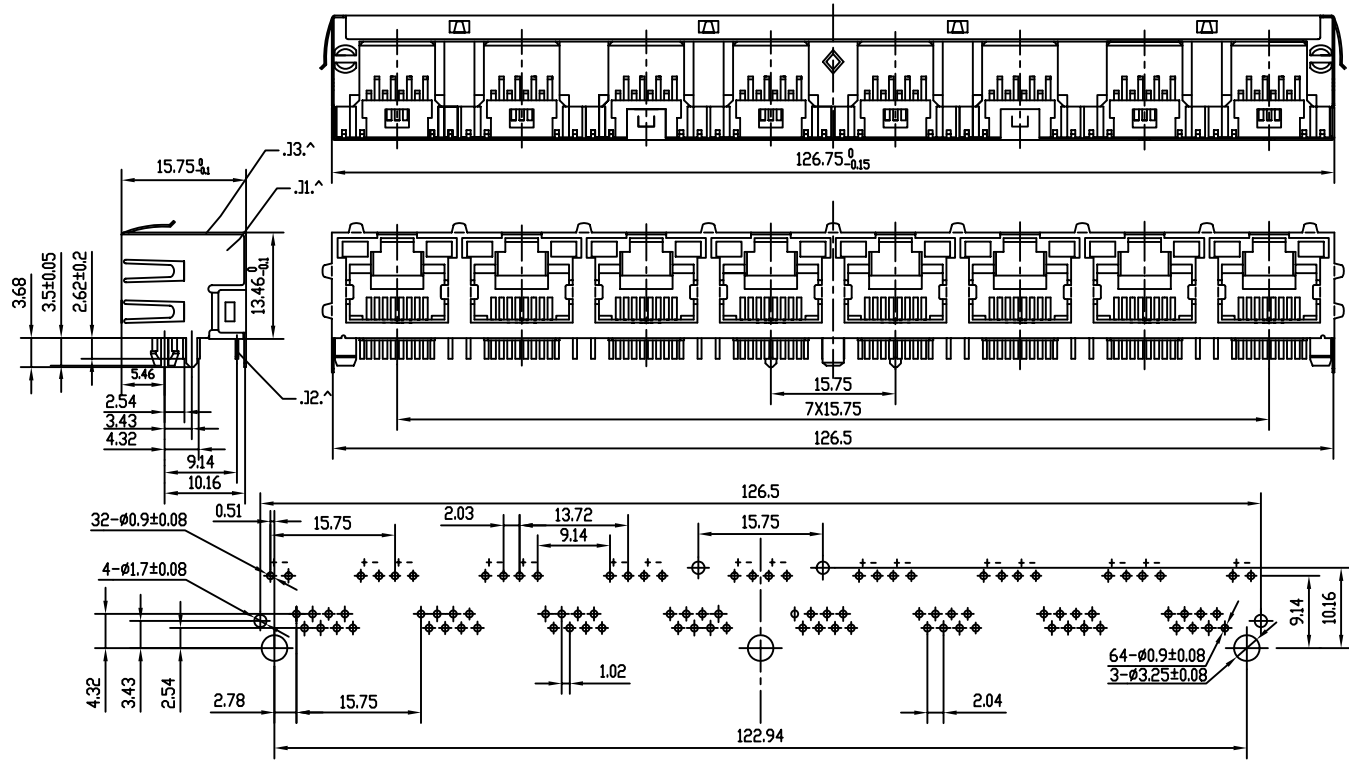


1 2 3 4 5 6 7 8 9 0

J
I
H
G
F
E
D
C
B
A



Specification

1. Insulation Resistance: 1000 Megohms min.
2. Withstand Voltage: 1000V, AC/ minute
3. Durability: 600 mating circles min.
4. Tolerances unless otherwise specified:
 $0^{\circ}10'$: ϕ 0.1; $10^{\circ}20'$: ϕ 0.15;
 $20^{\circ}30'$: ϕ 0.2
5. Selective Gold-plating: (3;6;15;30;50) micro inch

(4)	Diode	16		
(3)	Shielding	1	Copper alloy with Nickel plated	0.25mm thickness
(2)	Pin	64	Phosphor Bronze	Gold-plating over Nickel
(1)	Housing	1	P B T	UL94V0 or 94V2
No.	Part Name	QTY	Materail	Remark



PART NO. MJF13ULA8-KF06B3YG-0808

DWG NO. MJF13ULA8-KF06B3YG-0808

FILE NO.

UNIT / mm

SCALE 1:1

CHECKED BY CY

DRAWING BY

PROJECTION

TOLERANCES ARE

.X ± 0.2
.XX ±
.XXX ±
AWG

DESCRIP TION:
AREA

8P8C 8PORT(W-LED W-EMI)
REVISIONS
HK
DATE

煜倫股份有限公司