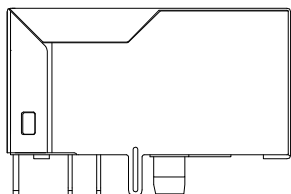
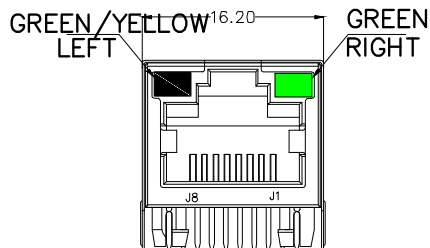


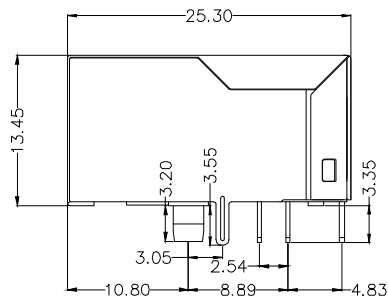
TOP VIEW



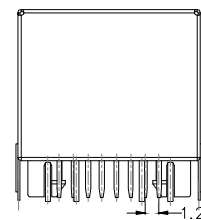
LEFT SIDE VIEW



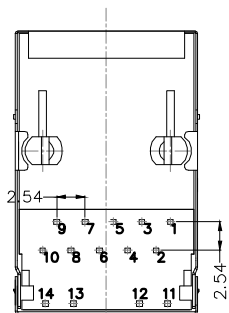
FRONT VIEW



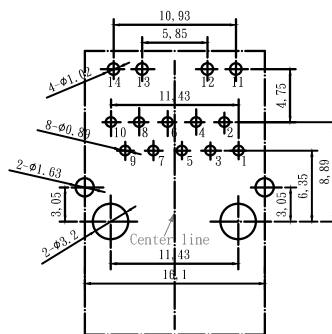
RIGHT SIDE VIEW



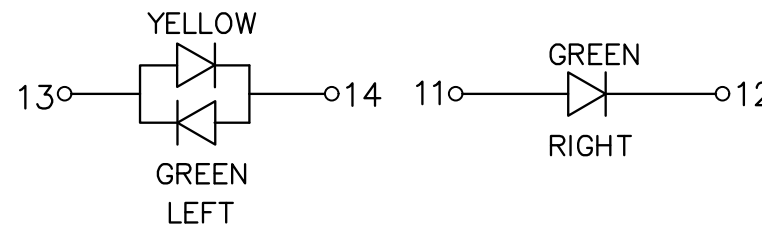
BACK VIEW



BOTTOM VIEW



RECOMMENDED PCB LAYOUT  
VIEWED FROM COMPONENT SIDE



YELLOW  
GREEN LEFT

GREEN  
RIGHT

13 14 11 12

GREEN LEFT

GREEN LEFT

RoHS Compliant

TOLERANCES ARE

**MORETHANALL**  
PCB CONNECTORS  
Cable ASSEMBLIES

DRAWING BY CY

CHECKED BY GENIUS

UNIT / mm

SCALE 1 : 1

DATE

SIZE A4

PJECTION

X, ±  
.X ± 0.25  
.XX ± 0.15  
.XXX ± 0.05  
ANG ±

照片框

ORDER INFORMATION

MJF13T056UL-KX06B3GYXG-0808-LF

SERIES

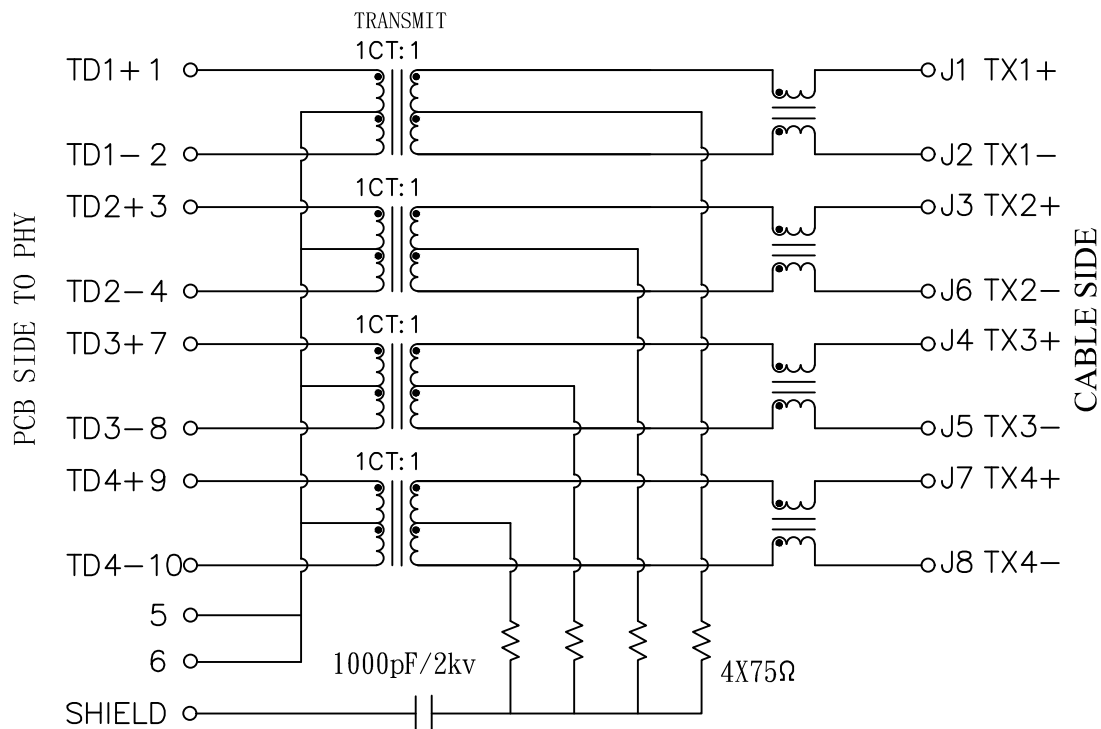
LEADFREE  
8P8C  
GREEN, YELLOW / X, GREEN  
REAR TAB 3.05mm  
06u" GOLD  
NON EAR

BLACK

煜倫股份有限公司

www.morethanall.com

DESCRIPTION:



**Electrical:**

1. Turn ratio: 1~2: J1~J2=1CT:1CT (±2%).  
3~4: J3~J6=1CT:1CT (±2%).  
7~8: J4~J5=1CT:1CT (±2%).  
9~10: J7~J8=1CT:1CT (±2%).
2. OCL: 350uH Min. at 100KHz 100mV 8mA DC.
3. Insertion Loss: -1.0 dB Max 1~100MHz.
4. Return loss: -18dB Min 1~30MHz;  
-14dB Min 30~60MHz.  
-12dB Min 60~80MHz.  
-10dB Min 80~100MHz.
5. Cross talk: -40dB Min 1~30MHz;  
-35dB Min 30~60MHz;  
-30dB Min 60~100MHz;
6. CMR: -30dB Min 1~100MHz;
7. Hi-Pot: 1500V AC & 2250V DC  
6S 1mA PRI TO SEC

**RoHS Compliant**

TOLERANCES ARE

**MORETHANALL**  
PCB CONNECTORS  
Cable ASSEMBLIES

DRAWING BY CY

CHECKED BY GENIUS

UNIT / mm

SCALE 1 : 1

DATE

SIZE A4

X, ±  
.X ± 0.25  
.XX ± 0.15  
.XXX ± 0.05  
ANG ±

PJECTION

照片框

**ORDER INFORMATION**

**MJF13T056UL-KX06B3GYXG-0808-LF**

SERIES

BLACK

06u" GOLD  
NON EAR

LEADFREE  
8P8C  
GREEN, YELLOW / X, GREEN  
REAR TAB 3.05mm

**煜倫股份有限公司**

[www.morethanall.com](http://www.morethanall.com)

DESCRIPTION: