

NOTES:

ELECTRICAL:

1. VOLTAGE RATING : 125 VAC RMS.
2. CURRENT RATING : 1.5 AMP.
3. CONTACT RESISTANCE : 35 MILLIOHMS MAX.
4. INSULATION RESISTANCE : 1000 MEGOHMS MIN. @ 500 VDC.
5. DIELECTRIC STRENGTH : 1000 VAC RMS 60Hz, 1MIN.

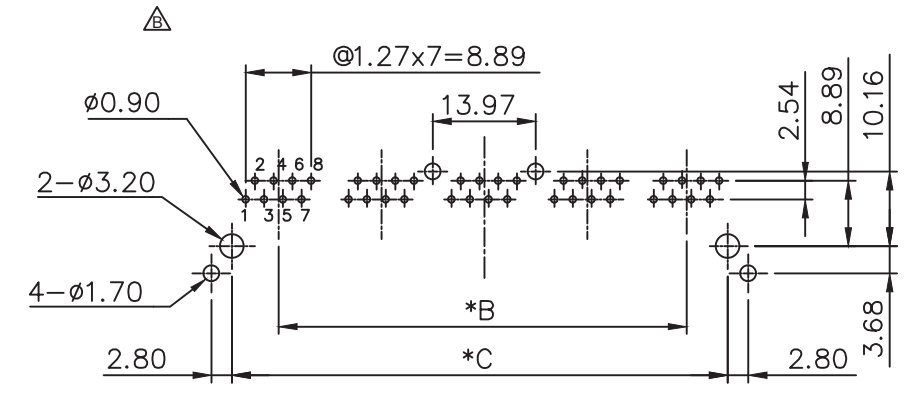
MECHANICAL:

1. HOUSING MATERIAL : GLASS FILLED POLYESTER OR HIGH TEMP. UL94V-0.
2. CONTACT MATERIAL : PHOSPHOR BRONZE t=0.35mm.
3. PLATING : GOLD PLATING OVER NICKEL.
4. OPERATING LIFE : 750 CYCLES MIN.
5. PCB RETENTION PRE-SOLDER : 1 LB MIN.
6. PCB RETENTION POST-SOLDER : 10 LBS MIN.

ENVIRONMENTAL:

1. STORAGE : -40°C TO +85°C.
2. OPERATION : 0°C TO +70°C.

MATES WITH MODULAR PLUG CONFORMING TO FCC PART 68, SUBPART F



PC Board Layout Component Side Shown

MJF13Ax-KT06A36-0808-LF
 3:1X03 WAY LEADFREE
 5:1X05 WAY

RoHS Compliant

PORTS	DIM"A"±0.10/0.20	DIM"B"±0.20	DIM"C"±0.05	DIM"D"±0.15
3	45.21	27.94	39.37	39.37
5	73.15	55.88	67.31	67.31

 煜倫股份有限公司	PART NO. MJF13Ax-KT06A36-0808		CHECKED BY CY	TOLERANCES ARE X.± .X± .XX± .XXX± ANG	DESCRIPTION: 1XN SIDE ENTRY PCB JACK 8P8C 20.57		
	DWG NO. MJF13Ax-KT06A36-0808						
FILE NO.		PROJECTION		AREA	REVISIONS	DATE	