

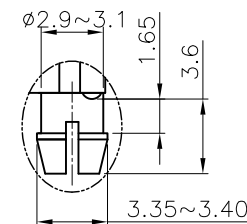
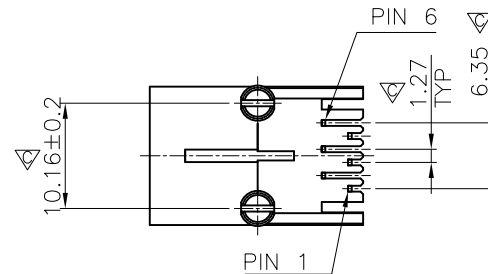
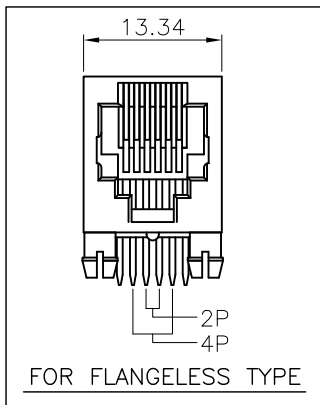
NOTE:
CAVITY CONFIRMS TO FCC RULES AND REGULATIONS PART 68, SUBPART F.

- MATERIAL:
HOUSING: PBT OR PA46 OR PA9T, WITH GLASS FIBER, UL 94V-0, STANDARD COLOR-BLACK.
CONTACTS: PHOSPHOR BRONZE.
- FINISH:
CONTACTS: GOLD PLATED ON CONTACT AREA, 0.0254 μ m [1 μ "] GOLD PLATED ON SOLDER TAIL, WITH ENTIRE CONTACT UNDERPLATED 1.27 μ m [50 μ "] MIN. NICKEL.

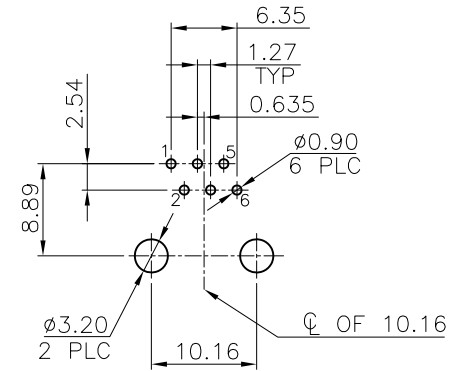
3. "▽" SHOWS QIP INSPECTION POINT.

LOGO (OPTIONAL)

SEE DETAIL B



DETAIL B
SCALE 2:1



RECOMMENDED PCB LAYOUT
RECOMMENDED PCB THICKNESS: 1.6mm
TOLERANCE: ± 0.05 (TOP VIEW)

RoHS Compliant

TOLERANCES ARE

MORETHANALL
PCB CONNECTORS
Cable ASSEMBLIES

煜倫股份有限公司

www.morethanall.com

DRAWING BY CY

CHECKED BY GENIUS

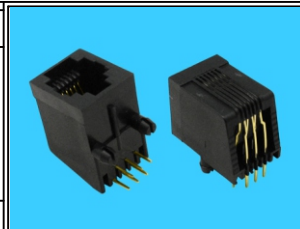
UNIT / mm SCALE 1:1

DATE

SIZE A4

PJECTION

X.±
.X±
.XX±
.XXX±
ANG±



ORDER INFORMATION

MJ16J-KX06-0606-LF

SERIES | 6P6C LEADFREE
| 06u" GOLD
NON EAR
BLACK

DESCRIPTION: 6POSITION, 90° (SPLIT PEGS), SIDE ENTRY PCB JACK