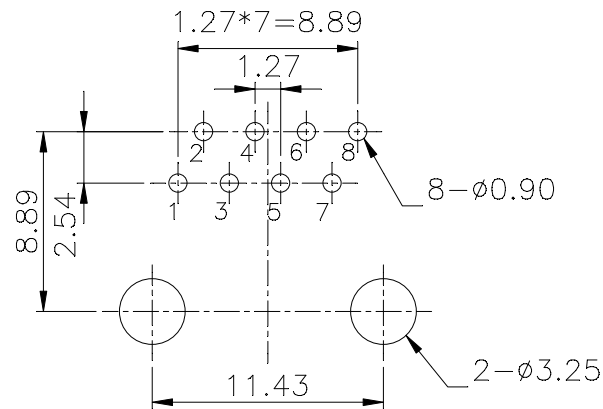
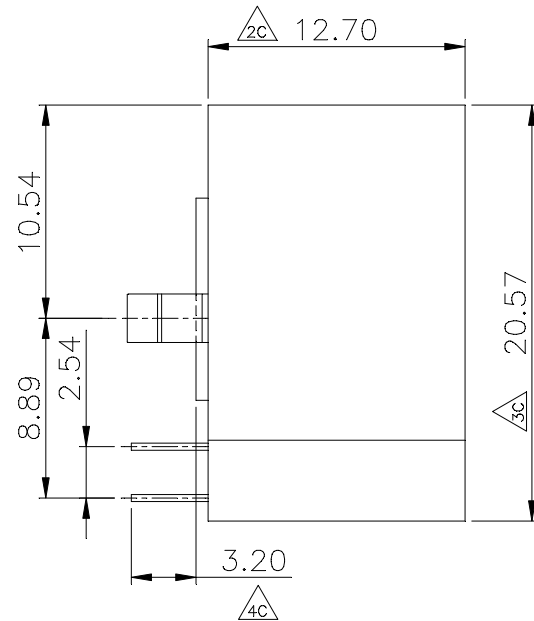
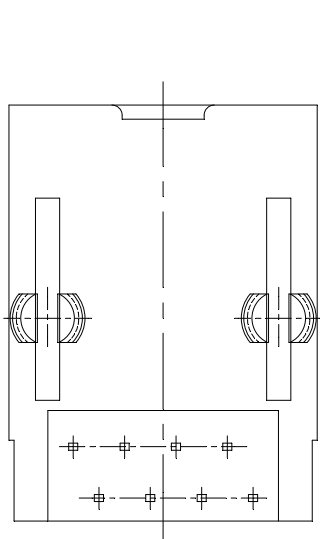


PCB LAYOUT/TOP VIEW



MATERIALS:

PLASTIC HOUSING: ENGINEERING THERMOPLASTIC
 FLAMMABILITY RATING UL 94V-0.
 INSERT: ENGINEERING THERMOPLASTIC
 FLAMMABILITY RATING UL 94V-0.(COLOR GRAY)
 CONTACTS: PHOSPHOR BRONZE
 PLATING: GOLD PLATING OVER NICKEL IN CONTACT.
 TIN PLATING OVER NICKEL IN SOLDER AREA.



※ 凡標註△記號者, 為品管檢驗之尺寸

MJ13C5A1-KX30-0808-LF
 30:30u" GOLD LEADFREE
 RoHS Compliant

MORE THAN ALL
 CONNECTORS
 ASSEMBLIES

煜倫股份有限公司

PART NO. MJ13C5A1-KX30-0808		CHECKED BY CY	TOLERANCES ARE X. ± 0.50 .X ± 0.38 .XX ± 0.25 .XXX ± 0.10 ANG ± 3°	DESCRIPTION: SIDE ENTRY C.5 JACK(8P8C插針)		
DWG NO. MJ13C5A1-KX30-0808						
FILE NO.		PROJECTION	AREA	REVISIONS	DATE	
UNIT / mm	SCALE 1:1					