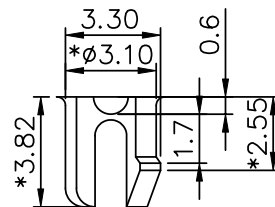
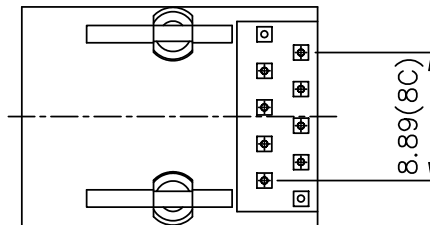


PC Board Layout
Component Side Shown



DETAIL "C"

NOTES:

ELECTRICAL:

1. VOLTAGE RATING: 125 VAC RMS.
2. CURRENT RATING: 1.5 AMP.
3. CONTACT RESISTANCE: 45 MILLIOHMS MAX.
4. INSULATION RESISTANCE: 1000 MEGOHMS MIN @ 500 VDC.
5. DIELECTRIC STRENGTH: 1000 VAC RMS 60Hz, 1MIN.

MECHANICAL:

1. HOUSING MATERIAL: FR52 OR PBT+30%GF UL94V-0
2. CONTACT MATERIAL: PHOSPHOR BRONZE $\phi 0.46\text{mm}$
3. PLATING: GOLD PLATING OVER NICKEL.
4. OPERATING LIFE: 750 CYCLES MIN.
5. PCB RETENTION PRE-SOLDER: 1 LB MIN.
6. PCB RETENTION POST-SOLDER: 10 LBS MIN.

ENVIRONMENTAL:

1. STORAGE: -40°C TO $+85^{\circ}\text{C}$.
 2. OPERATION: -40°C TO $+85^{\circ}\text{C}$.
- MATES WITH MODULAR PLUG CONFORMING TO FCC PART 68, SUBPART F.

RoHS Compliant

TOLERANCES ARE

MORETHANALL
PCB CONNECTORS
Cable ASSEMBLIES

DRAWING BY CY

CHECKED BY GENIUS

UNIT / mm

SCALE 1 : 1

DATE

SIZE A4

PJECTION

X, \pm
.X \pm 0.20
.XX \pm 0.15
.XXX \pm 0.10
ANG \pm

照片框

ORDER INFORMATION

MJ13A1-KX06-0808-LF

SERIES | | | LEADFREE
| | | 8P8C
| | | 06u" GOLD
| | | NON EAR
| | | BLACK

煜倫股份有限公司

www.morethanall.com

DESCRIPTION: 1PORT SIDE ENTRY RJ45 JACK UTP