

NOTE:

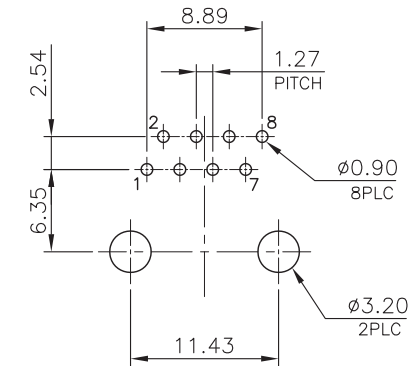
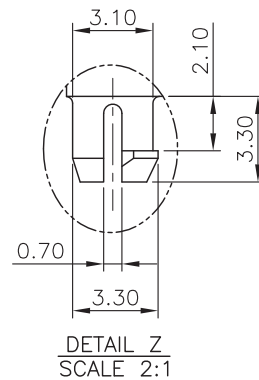
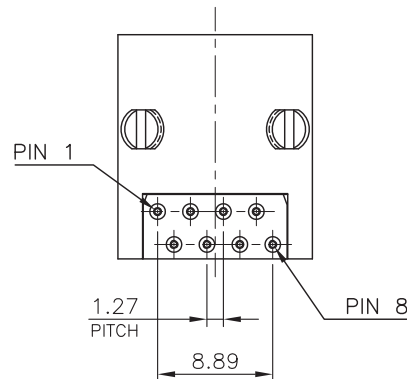
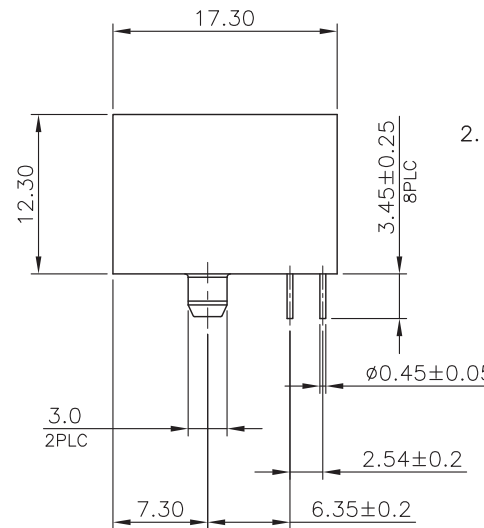
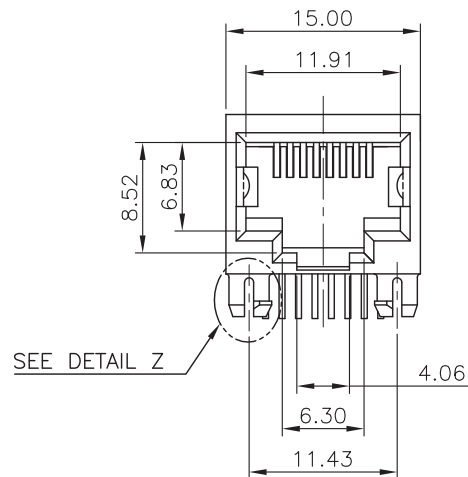
CAVITY CONFIRMS TO FCC RULES AND REGULATIONS PART 68, SUBPART F.

1. MATERIAL:

- 1.1 HOUSING: PBT, WITH GLASS FIBER,
UL94V-0, STANDARD COLOR-BLACK.
1.2 INSERT HOUSING: PBT, WITH GLASS FIBER,
UL94V-0, STANDARD COLOR-BLACK.
1.3 CONTACTS: PHOSPHOR BRONZE.

2. FINISH:

- 2.1 CONTACTS: GOLD PLATED ON ENTIRE CONTACT,
1.27 μ m [50 μ] MIN. NICKEL
UNDERPLATED OVERALL.



RECOMMENDED PCB LAYOUT
PCB THICKNESS: 1.6mm
TOLERANCE: ± 0.05 mm (TOP VIEW)

RoHS Compliant

TOLERANCES ARE

MORETHANALL
PCB CONNECTORS
Cable ASSEMBLIES

煜倫股份有限公司

www.morethanall.com

DRAWING BY CY

CHECKED BY GENIUS

UNIT / mm

SCALE 1 : 1

DATE

SIZE A4

PPOJECTION

X, \pm
.X \pm 0.25
.XX \pm 0.13
.XXX \pm 0.05
ANG \pm

照片框

ORDER INFORMATION

MJ12S-KX15-0808-LF

SERIES

LEADFREE
8P8C
15u" GOLD
NON POST
BLACK

DESCRIPTION: 8POSITION, ROUND PIN, W/O SHELL, SIDE ENTRY PCB JACK