

SPECIFICATIONS

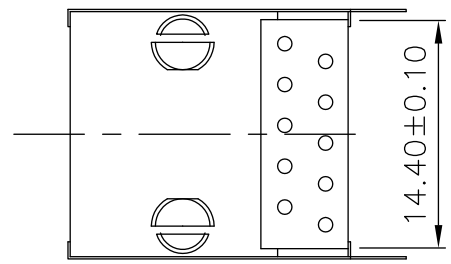
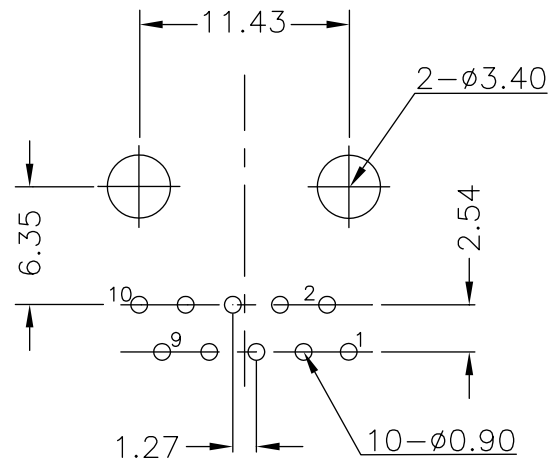
MATERIAL:

1. Housing : PBT Polyester UL94V0
2. Color : Black
3. Contacts : 0.35mm Thickness Alloy Selective Gold Plating

ELECTRICAL:

1. Current Rating : 1.5 AMP
2. Voltage Rating : 150 VAC
3. Contact Resistance : 20 Milliohms MAX
4. Insulation Resistance : 500 Milliohms MIN
5. Dielectric Withstanding Voltage : 1000 VAC, 1min

UL. CUL NO.: E166003



PCB LAYOUT/TOP VIEW



煜倫有限公司

PART NO. MJ12L-KB06-1010		CHECKED BY CY	TOLERANCES ARE .X ± 0.3 .XX ± 0.2 .XXX ± .015	DESCRIPTION: 10P Side Entry Modular Jack			
DWG NO. MJ12L-KB06-1010							
FILE NO.		PROJECTION	AREA	REVISIONS	HK	DATE	
UNIT / mm	SCALE 1:1						