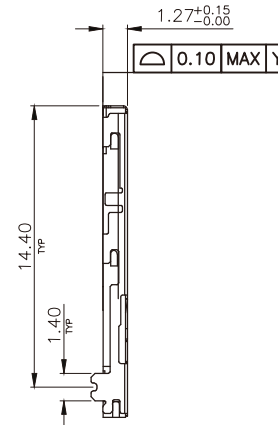


RECOMMENDED PCB LAYOUT
TOLERANCES ± 0.05



NOTES:

1.MATERIAL:

- 1.1 HOUSING.SLIDER:THERMOPLASTIC RESIN
UL 94V-0 COLOR:BLACK
- 1.2 CONTACT : COPPER ALLOY
- 1.3 SHELL:STAINLESS STEEL
- 1.4 COIL:SWP
- 1.5 CAM ROD:STAINLESS STEEL

2.FINISH:

- 2.1 Au"PL AT CONTACT AREA
Au"PL AT SOLDERING AREA
- 2.2 SHELL:AU"PL AT SOLDERING AND SWITCH AREA

3.NON-CUMULATIVE TOLERANCE

4.COPLANARITY IS 0.1MAX.

5.CIRCUIT DRAWING OF SWITCH

6.OVERALL TOLERANCE: ± 0.1

7.SWITCH MOVING AREA

RoHS Compliant

TOLERANCES ARE

MORETHANALL
PCB CONNECTORS
Cable ASSEMBLIES

DRAWING BY CY

X ± 0.20

CHECKED BY GENIUS

X ± 0.15

UNIT / mm

SCALE 1 : 1

.XX ± 0.10

DATE

.XXX ± 0.05

ANG \pm

SIZE A4

P PROJECTION

照片框

ORDER INFORMATION

MISCP-W15MC-06-LF

SERIES

LEADFREE

06 WAY

C LAYOUT

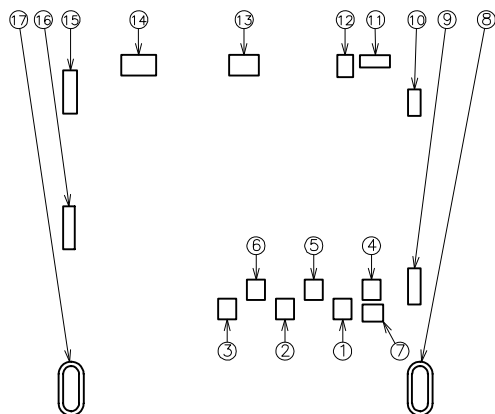
15.35 METAL FOOT

90°SMT

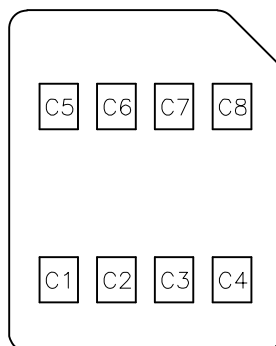
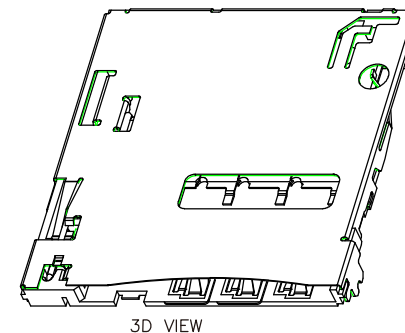
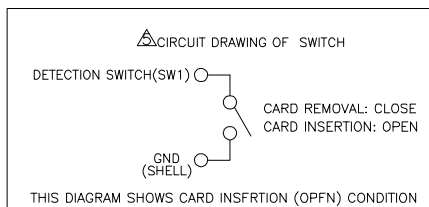
煜倫股份有限公司

www.morethanall.com

DESCRIPTION: MICRO SIM CONNECTOR PUSH-PUSH DIP TYPE



PCB LAYOUT(REFERENCE)
(VIEWED FROM CONNECTOR MOUNT SIDE)



SIM CARD PAD LAYOUT

Connector Pin Assignment

No.	Pin Name	Description
①	C1	Vcc of SIM
②	C2	RST of SIM
③	C3	CLK of SIM
④	C5	GND of SIM
⑤	C6	Vpp of SIM
⑥	C7	I/O of SIM
⑦	SW	Detection Switch
⑧~⑰	GND	Shell Ground

SIM Card Pin Assignment

Pin No.	Name
C1	Vcc
C2	RST
C3	CLK
C4	Reserved
C5	GND
C6	Vpp
C7	I/O
C8	Reserved

NOTES:

1.MATERIAL:

- 1.1 HOUSING.SLIDER:THERMOPLASTIC RESIN
UL 94V-0 COLOR:BLACK
- 1.2 CONTACT : COPPER ALLOY
- 1.3 SHELL:STAINLESS STEEL
- 1.4 COIL:SWP
- 1.5 CAM ROD:STAINLESS STEEL

2.FINISH:

- 2.1 Au"PL AT CONTACT AREA
Au"PL AT SOLDERING AREA
- 2.2 SHELL:Au"PL AT SOLDERING AND SWITH AREA

3.NON-CUMULATIVE TOLERANCE

4.COPLANARITY IS 0.1MAX.

5.CIRCUIT DRAWING OF SWITCH

6.OVERALL TOLERANCE:±0.1

7.SWITCH MOVING AREA

RoHS Compliant

TOLERANCES ARE

MORETHANALL
PCB CONNECTORS
Cable ASSEMBLIES

煜倫股份有限公司

www.morethanall.com

DRAWING BY CY

CHECKED BY GENIUS

UNIT / mm SCALE 1 : 1

DATE

SIZE A4

X, ± 0.20

.X ± 0.15

.XX ± 0.10

.XXX ± 0.05

ANG ±

PPOJECTION

照片框

ORDER INFORMATION

MISCP-W15MC-06-LF

SERIES

LEADFREE

06 WAY

C LAYOUT

15.35 METAL FOOT

90°SMT

DESCRIPTION: MICRO SIM CONNECTOR PUSH-PUSH DIP TYPE