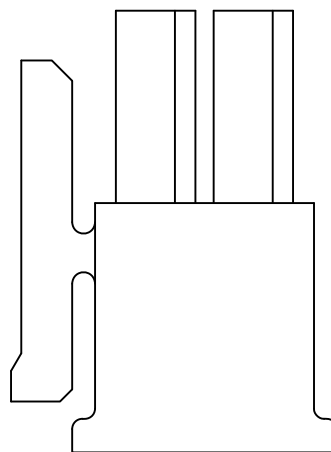
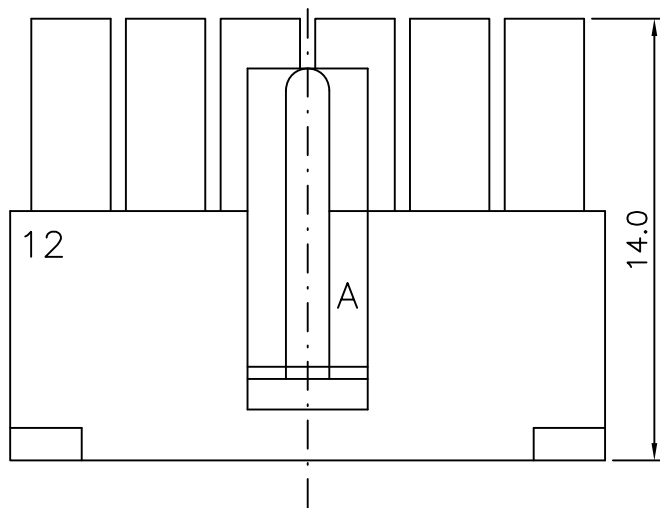


Specifications:  
 Current rating:5.0Amps  
 Voltage rating:250V AC,DC  
 Contact resistance:10m ohm Max  
 Insulation resistance:1,000M ohm min.  
 Dielectric Withstanding:1,500V AC For One Minute  
 Operating Temperature:-25°C ~ +105°C  
 Materials:  
 Insulator:High Temp.Plastic(UL94V-0)



RoHS Compliant

TOLERANCES ARE

**MORETHANALL**  
 PCB CONNECTORS  
 Cable ASSEMBLIES

煜倫股份有限公司

www.morethanall.com

DRAWING BY CY

CHECKED BY GENIUS

UNIT / mm

SCALE 1:1

DATE

SIZE A4

PPOJECTION

X.±  
 .X±  
 .XX±  
 .XXX±  
 ANG±

照片框

ORDER INFORMATION

MIF-SH-2X06-LF  
 SERIES | LEADFREE  
 | 12WAY  
 HOUSING  
 FEMALE

DESCRIPTION: 3.0mm Pitch Receptacle Housing