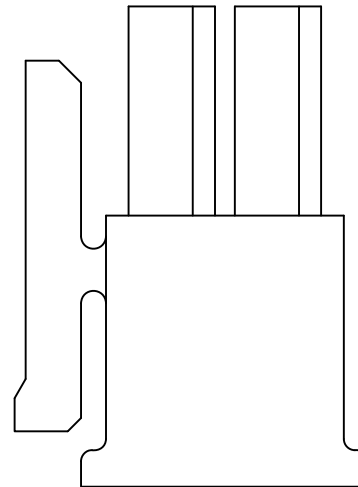
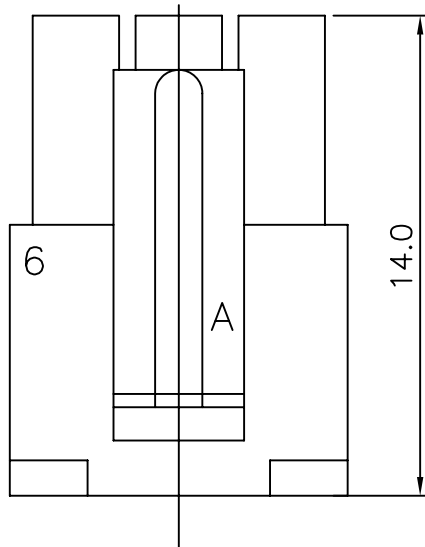


Specifications:
 Current rating:5.0Amps
 Voltage rating:250V AC,DC
 Contact resistance:10m ohm Max
 Insulation resistance:1,000M ohm min.
 Dielectric Withstanding:1,500V AC For One Minute
 Operating Temperature:-25°C ~ +105°C
 Materials:
 Insulator:High Temp.Plastic(UL94V-0)



RoHS Compliant

TOLERANCES ARE

MORETHANALL
 PCB CONNECTORS
 Cable ASSEMBLIES

煜倫股份有限公司

www.morethanall.com

DRAWING BY CY

CHECKED BY GENIUS

UNIT / mm SCALE 1:1

DATE

SIZE A4

X.±
 .X±
 .XX±
 .XXX±
 ANG ±

PJECTION

照片框

ORDER INFORMATION

MIF-SH-2X03-LF
 SERIES | LEADFREE
 | 06WAY
 HOUSING
 FEMALE

DESCRIPTION: 3.0mm Pitch Receptacle Housing