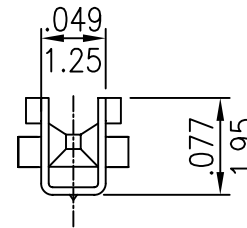
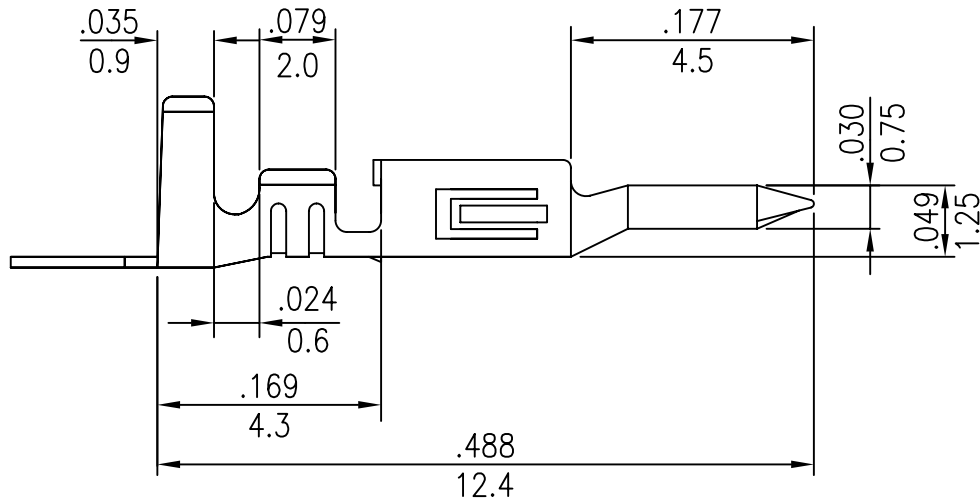
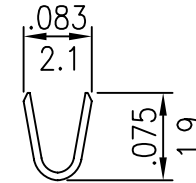


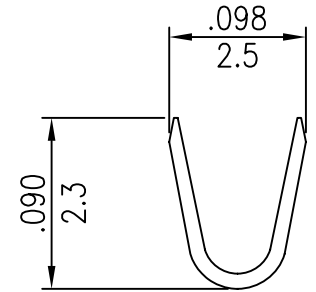
- * Material: Phosphor bronze
- * Finished: Tin-plated 60u"
- * Wire range: AWG#20~#26
- * Thickness: 0.20mm
- * Q'TY: 5,000pcs/reel



B-B SECTION



A-A SECTION



MIF-MTxx-xx-LF
 BLANK: TIN/PLATE
 SG: SEMI/GOLD
 LEADFREE
 20: 20-24AWG
 26: 26-30AWG

RoHS Compliant



PART NO. MIF-MTxx-xx	
DWG NO. MIF-MTxx-xx	
FILE NO.	
UNIT / mm	SCALE 1:1

APPROVED BY CY	TOLERANCES ARE .X .XX .XXX AWG
DRAWING BY	
PROJECTION	

DESCRIPTION:	3.0mm MICKO FIT MALE TERMINAL			
AREA	REVISIONS	HK	DATE	

煜倫股份有限公司