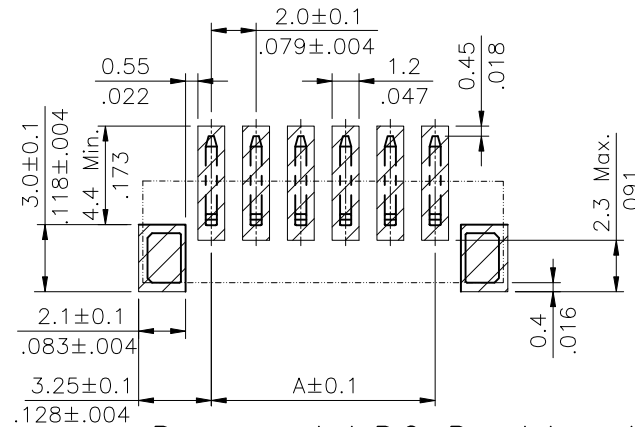
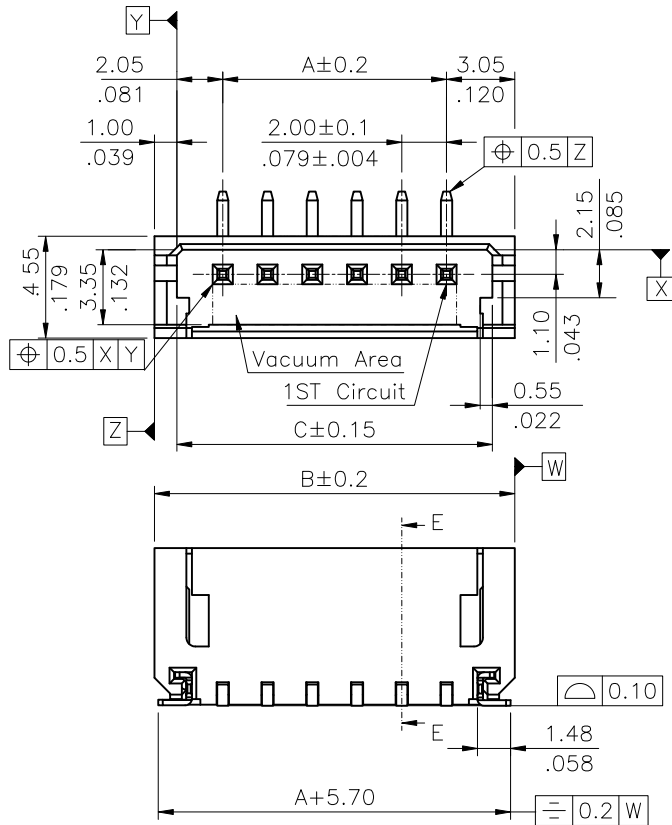


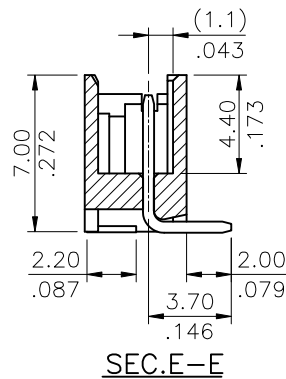
Note:

- Material:
  - \* Insulation: Nylon 9T+33% GF. UL 94V-0, Color Nature
  - \* Contact: Brass
  - \* Tab: Brass
- Plating:
  - \* Tab: Matte Tin plated over Nickel
- For Lead Free IR Reflow Process
- ELV and Rosh Compliant

Circuits	Dimension			Circuits	Dimension		
	A	B	C		A	B	C
2	2.00(.079)	8.10(.319)	6.10(.240)	9	16.00(.630)	22.10(.870)	20.10(.791)
3	4.00(.157)	10.10(.398)	8.10(.319)	10	18.00(.709)	24.10(.949)	22.10(.870)
4	6.00(.236)	12.10(.476)	10.10(.398)	11	20.00(.787)	26.10(1.028)	24.10(.949)
5	8.00(.315)	14.10(.555)	12.10(.476)	12	22.00(.866)	28.10(1.106)	26.10(1.028)
6	10.00(.394)	16.10(.634)	14.10(.555)	13	24.00(.945)	30.10(1.185)	28.10(1.106)
7	12.00(.472)	18.10(.713)	16.10(.634)	14	26.00(1.024)	32.10(1.264)	30.10(1.185)
8	14.00(.551)	20.10(.791)	18.10(.713)	15	28.00(1.102)	34.10(1.343)	32.10(1.264)



Recommended P.C. Board Layout



SEC.E-E

RoHS Compliant

TOLERANCES ARE

**MORETHANALL**  
PCB CONNECTORS  
Cable ASSEMBLIES

DRAWING BY CY  
CHECKED BY GENIUS  
UNIT / mm SCALE 1 : 1  
DATE  
SIZE A4

X ±  
.X ± 0.30  
.XX ± 0.20  
.XXX ± 0.10  
ANG ±

照片框

ORDER INFORMATION

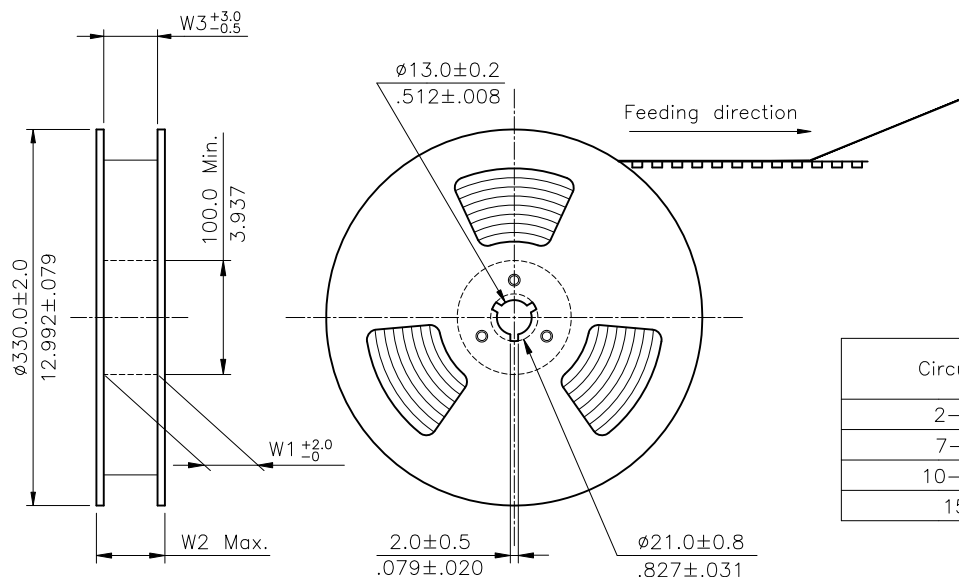
MI2-VR-xx-LF  
SERIES | LEADFREE  
| 02~15 WAY  
| REEL  
| 180°SMT

煜倫股份有限公司

www.morethanall.com

PJECTION

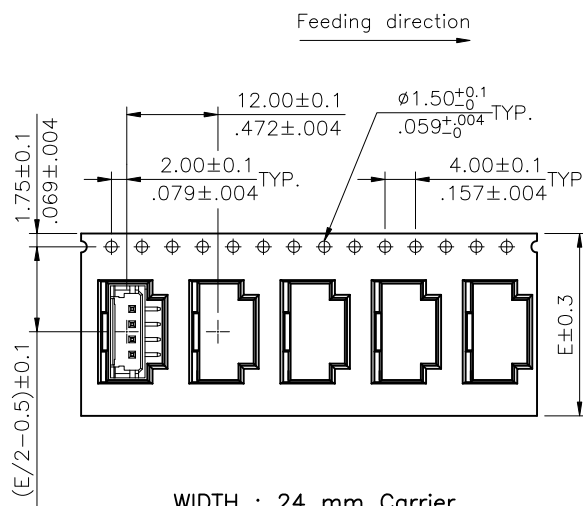
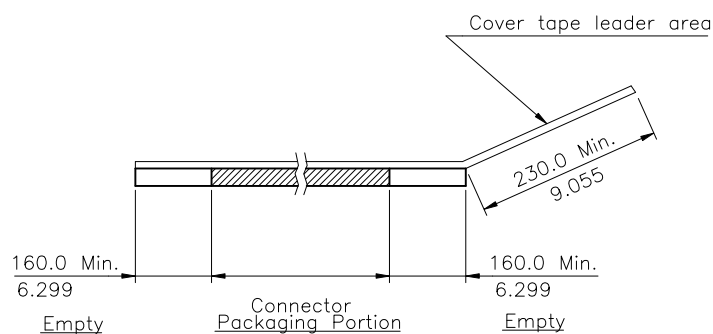
DESCRIPTION: 2.00mm PITCH TOP ENTRY SMT HEADER



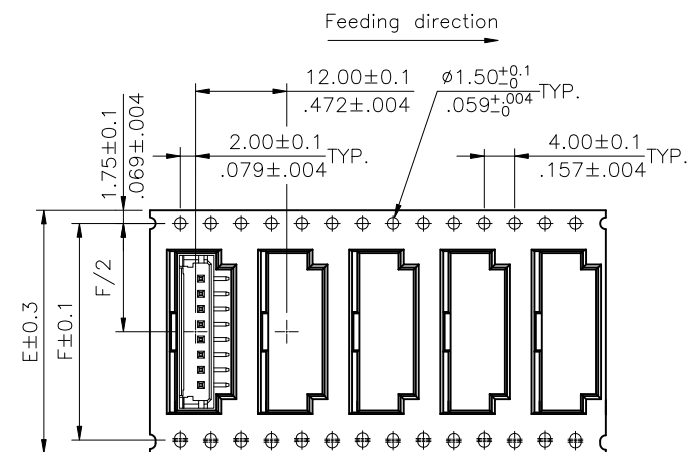
NOTES:

1. 10 sprocket hole pitch cumulative tolerance  $\pm 0.20$
2. Carrier camber is within 1 mm in 250 mm.
3. Material: Transparent Anti-static Polysyrene.
4. All dimensions meet EIA-481-2 requirements.
5. Thickness :  $0.50 \pm 0.05$ mm.
6. Packing length per 22" Reel : 35 Meters.
7. Component load per 13" Reel : 900 pcs.

Circuits	Dimension					Packing (Reel/Caton)
	E	F	W1	W2	W3	
2-6	24.0(.945)	—	24.5(.965)	30.5(1.200)	24.5(.965)	8
7-9	32.0(1.260)	28.40(1.118)	32.5(1.280)	38.5(1.516)	32.5(1.280)	6
10-14	44.0(1.732)	40.40(1.596)	44.5(1.752)	50.5(1.988)	44.5(1.752)	5
15	56.0(2.204)	52.50(2.067)	56.5(2.224)	62.5(2.460)	56.5(2.224)	4



WIDTH : 24 mm Carrier



WIDTH : 32,44,56 mm Carrier

RoHS Compliant

TOLERANCES ARE

**MORETHANALL**  
PCB CONNECTORS  
Cable ASSEMBLIES  
煜倫股份有限公司

DRAWING BY CY

X, ±

CHECKED BY GENIUS

.X ± 0.30

UNIT / mm

SCALE 1 : 1

.XX ± 0.20

DATE

.XXX ± 0.10

ANG ±

SIZE A4

PJECTION

照片框

ORDER INFORMATION

MI2-VR-xx-LF  
SERIES | T LEADFREE  
| 02~15 WAY  
| REEL  
| 180°SMT

www.morethanall.com

DESCRIPTION: 2.00mm PITCH TOP ENTRY SMT HEADER