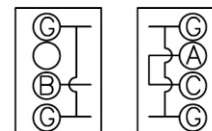


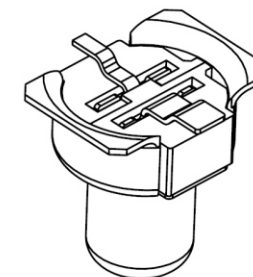
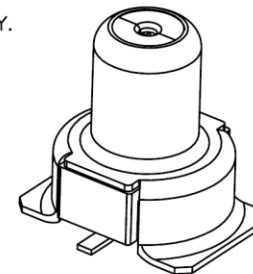
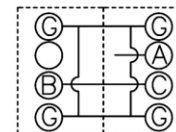
- NOTE: UNLESS OTHERWISE SPECIFIED
1. DIMENSION SHALL BE INTERPRETED PER ANSI Y14.5M-1994.
  2. DIMENSION MARKED ▼ TO BE CHECKED.
  3. HOUSING MATERIAL: HIGH TEMPERATURE PLASTIC.
  4. CONTACT MATERIAL: COPPER ALLOY.

Not mated with the Plug(N.C)



PLUG CAE-0000-068

Mated with the Plug(N.O)



⑤	1	CONTACT 2,GOLD FLASH	COPPER ALLOY	
④	1	CONTACT 1,GOLD FLASH	COPPER ALLOY	
③	1	TRUNK CONTACT,GOLD FLASH	COPPER ALLOY	
②	1	HOUSING RIGHTT,ENGINNER PLASTIC	POLYAMIDE	
①	1	HOUSING LEFT,ENGINNER PLASTIC	POLYAMIDE	
ITEM	PART NO.	Q'TY	DESCRIPTION	REMARK

**MHT-JV23-03-LF**  
LEADFREE

**RoHS Compliant**

RECOMMENDED PCB LAYOUT

**MORETHANALL**  
CONNECTORS  
ASSEMBLIES

PART NO. **MHT-JV23-03**

DWG NO. **MHT-JV23-03**

FILE NO.

UNIT / mm

SCALE 1:1

CHECKED BY CY

DRAWING BY

PROJECTION

TOLERANCES ARE

.X ± 0.2  
.XX ±  
.XXX ±  
AWG

DESCRIPTION:

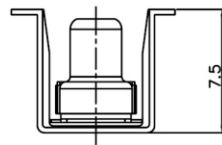
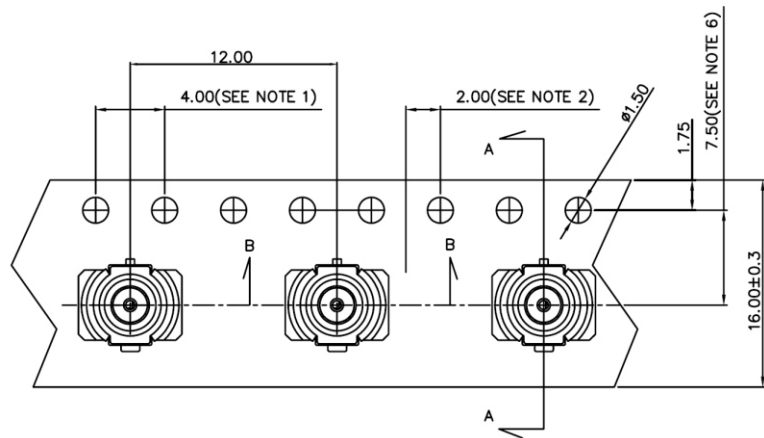
AREA

REVISIONS

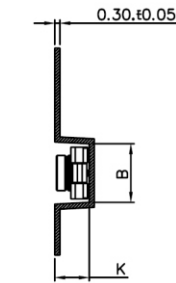
HK

DATE

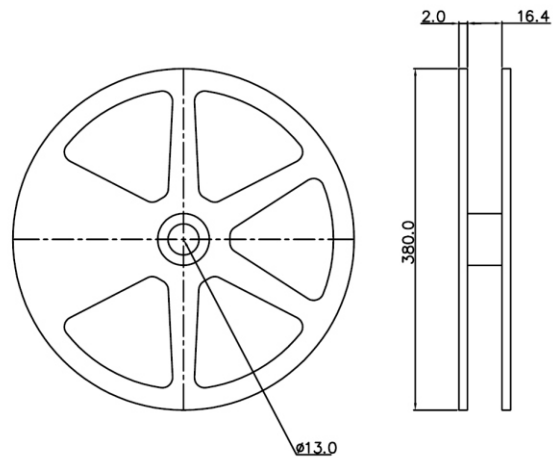
焜倫股份有限公司



SECTION: B-B



SECTION A-A



NOTE: UNLESS OTHERWISE SPECIFIED

1. 10 SPROCKET HOLE PITCH CUMULATIVE TOLERANCE  $\pm 0.2$
2. CAMBER NOT TO EXCEED 1MM IN 100MM.
3. MATERIAL: CLEAR ADVANTEK POLYSTYRENE.
4. A AND B MEASURED ON A PLANE 0.3MM ABOVE THE BOTTEM OF THE POCKET.
5. K MEASURED FROM A PLANE ON THE INSIDE BOTTOM OF THE POCKET TO THE TOP SURFACE OF THE CARRIER TAPE.
6. POCKET POSITION RELATIVE TO SPROCKET HOLE MEASURED AS TRUE POSITION OF POCKET, NOT POCKET HOLE.
7. MINIMUM QUANTITY :380 MM DIA. REEL/1000 PCS.

**MORETHANALL**  
CONNECTORS  
ASSEMBLIES

PART NO. **MHT-JV23-03**

DWG NO. **MHT-JV23-03**

CHECKED BY CY

TOLERANCES ARE

DESCRIP TION:

FILE NO.

DRAWING BY

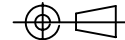
.X  $\pm 0.2$   
.XX  $\pm$   
.XXX  $\pm$   
AWG

煜倫股份有限公司

UNIT / mm

SCALE 1:1

PROJECTION



AREA

REVISIONS

HK

DATE