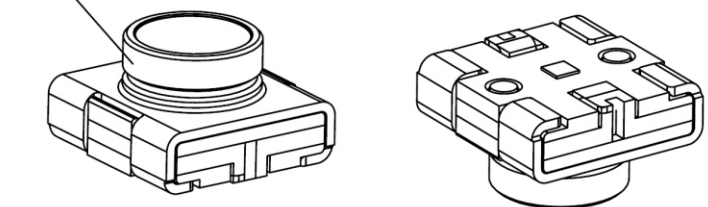
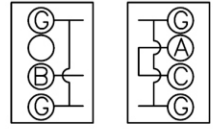


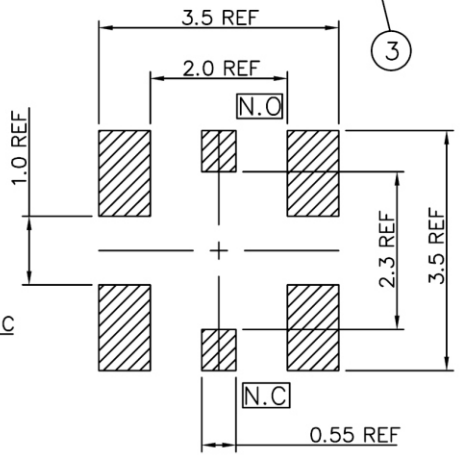
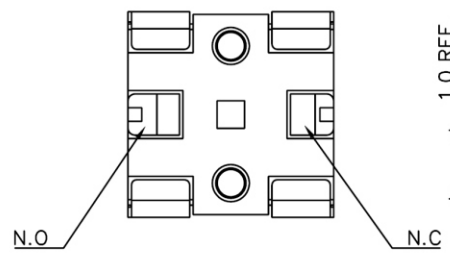
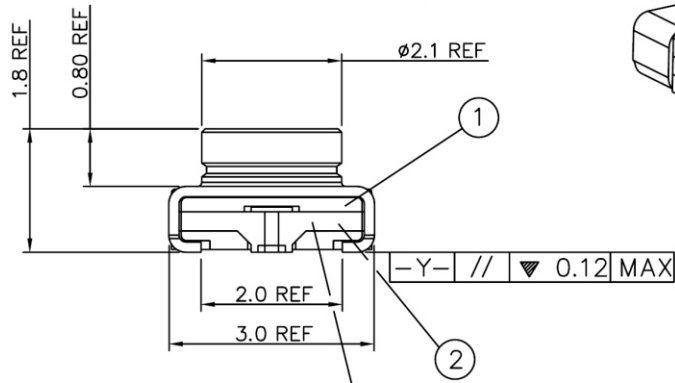
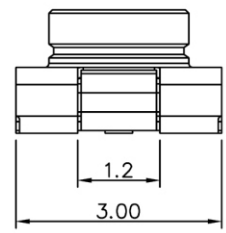
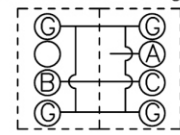
- NOTE: UNLESS OTHERWISE SPECIFIED
 1. DIMENSION SHALL BE INTERPRETED PER ANSI Y14.5M-1994.
 2. DIMENSION MARKED ▼ TO BE CHECKED.
 3. HOUSING MATERIAL: HIGH TEMPERATURE PLASTIC.
 4. CONTACT MATERIAL: COPPER ALLOY.



Not mated with the Plug(N.C)



Mated with the Plug(N.O)



⑥	1	CONTACT 2,GOLD FLASH		
⑤	1	CONTACT 1,GOLD FLASH		
④	1	TRUNK CONTACT,GOLD FLASH		
③	1	HOUSING BOT,ENGINEER PLASTIC		
②	1	HOUSING MID,ENGINEER PLASTIC		
①	1	HOUSING TOP,ENGINEER PLASTIC		
ITEM	PART NO.	Q'TY	DESCRIPTION	REMARK

MHT-JV10-03-LF
LEADFREE

RoHS Compliant

RECOMMENDED PCB LAYOUT



PART NO. **MHT-JV10-03**

DWG NO. **MHT-JV10-03**

FILE NO.

CHECKED BY CY

DRAWING BY

TOLERANCES ARE

.X ± 0.2

.XX ±

.XXX ±
AWG

DESCRIPTION:

煜倫股份有限公司

UNIT / mm

SCALE 1:1

PROJECTION

AREA

REVISIONS

HK

DATE