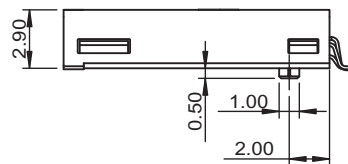
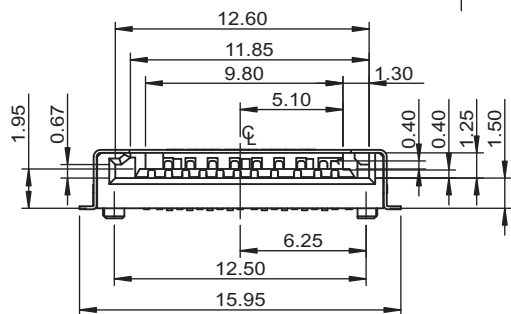


NOTES:  
 1. MATERIAL:  
 INSULATOR: HIGH TEMPERATURE THERMOPLASTIC,  
 UL94V-0, BLACK  
 CONTACT: PHOSPHOR BRONZE



RoHS Compliant

TOLERANCES ARE

**MORETHANALL**  
 PCB CONNECTORS  
 Cable ASSEMBLIES

DRAWING BY CY

CHECKED BY GENIUS

UNIT / mm

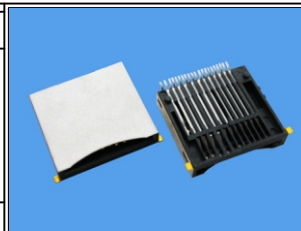
SCALE 1 : 1

DATE

SIZE A4

PPOJECTION

X, ±  
 X, ±  
 .XX ±  
 .XXX ±  
 ANG ±



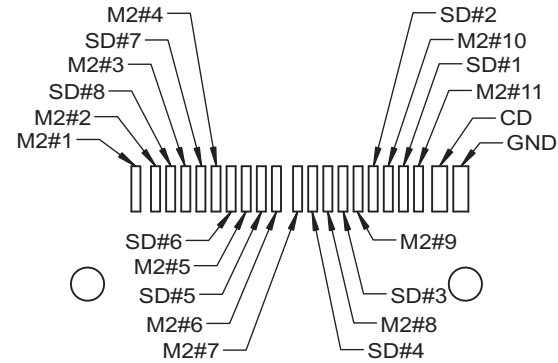
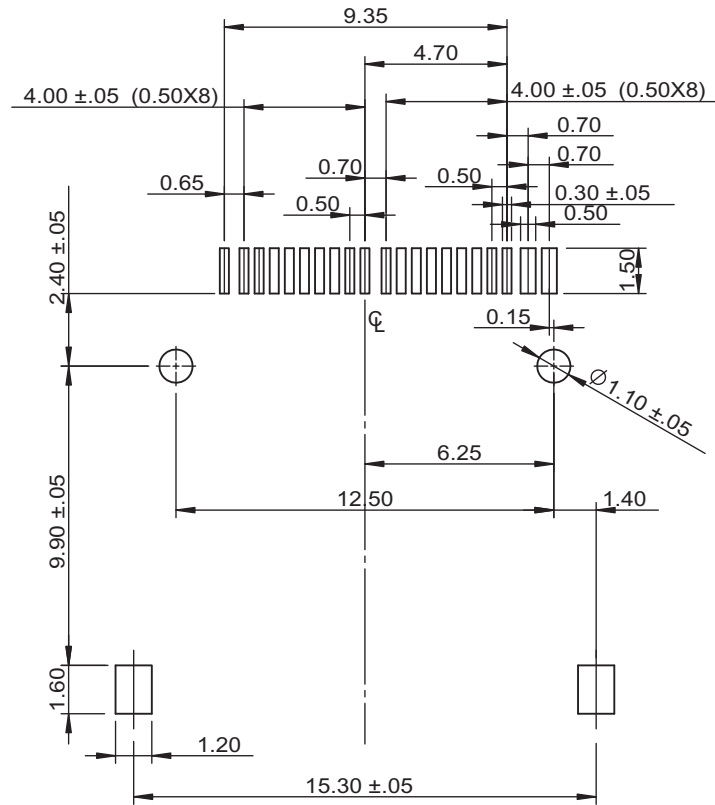
ORDER INFORMATION

MHC-W12-301-LF  
 SERIES | | LEADFREE  
 | | 3 IN 1  
 | | POST TO POST 12.5mm  
 | | 90°SMT

DESCRIPTION: 3 in 1(M2 & microSD&T-Flash)

煜倫股份有限公司

www.morethanall.com



| Pin Assignment: |             |       |         |
|-----------------|-------------|-------|---------|
| M2 #1           | BS          | SD #1 | DTA 2   |
| M2 #2           | DAT1        | SD #2 | CD/DAT3 |
| M2 #3           | DAT0        | SD #3 | CMD     |
| M2 #4           | DAT2        | SD #4 | VDD     |
| M2 #5           | INS         | SD #5 | CLK     |
| M2 #6           | DAT3        | SD #6 | VSS     |
| M2 #7           | SCLK        | SD #7 | DAT0    |
| M2 #8           | VCC         | SD #8 | DAT1    |
| M2 #9           | VSS         |       |         |
| M2#10           | NC/Roscrved |       |         |
| M2#11           | NC/Roscrved |       |         |

PCB LAYOUT FOR

|              |                               |
|--------------|-------------------------------|
| WITHOUT CARD | microSD&T-Flash CARD INSERTED |
| CD           | CD                            |
| ○            | ○-----○                       |
| GROUND       | GROUND                        |
| ○            | ○-----○                       |

RoHS Compliant

TOLERANCES ARE



DRAWING BY CY

CHECKED BY GENIUS

UNIT / mm

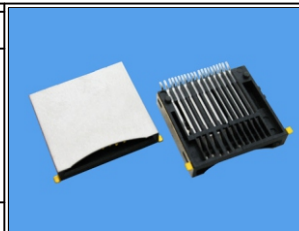
SCALE 1 : 1

DATE

SIZE A4

X, ±  
X, ±  
.XX ±  
.XXX ±  
ANG ±

PPOJECTION



ORDER INFORMATION

MHC-W12-301-LF  
 SERIES | LEADFREE  
 3 IN 1  
 POST TO POST 12.5mm  
 90°SMT

煜倫股份有限公司

www.morethanall.com

DESCRIPTION: 3 in 1(M2 & microSD&T-Flash)