

A-A Section

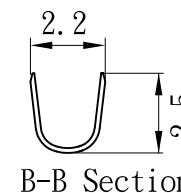
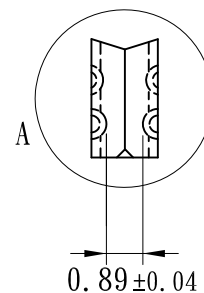
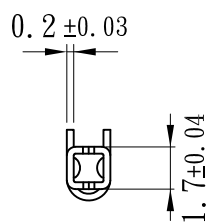
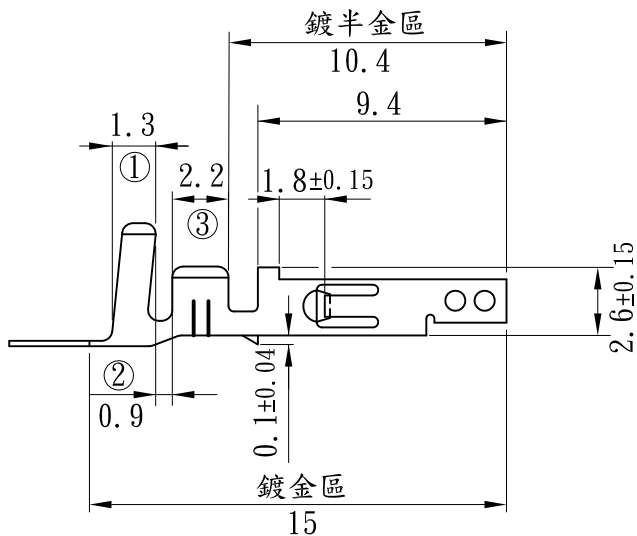
適用電線(Applicable wire):
AWG#18~22(1007)

線皮外徑(Insulation O.D):
2.1~1.7 mm

對手件(Mating part):
1.14mm Square PIN

包裝數量(Standard packing):
5000 PCS

此產品須符合RoHS指令要求
(The product must conform to
the RoHS directive)



B-B Section

材質(Material): 黃銅[Brass] 磷青銅[Phosphor bronze]

RoHS Compliant

TOLERANCES ARE

MORETHANALL
PCB CONNECTORS
Cable ASSEMBLIES

DRAWING BY CY

CHECKED BY GENIUS

UNIT / mm

SCALE 1 : 1

DATE

SIZE A4

PJECTION

X. ±
.X ± 0.30
.XX ±
.XXX ±
ANG ±

照片框

ORDER INFORMATION

MF-FT-18-LF
SERIES | LEADFREE
18-22AWG
TERMINAL
FEMALE

煜倫股份有限公司

www.morethanall.com

DESCRIPTION: