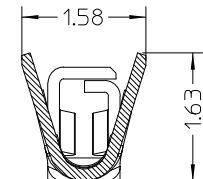
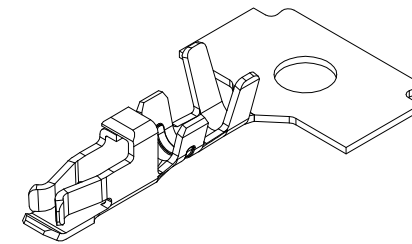
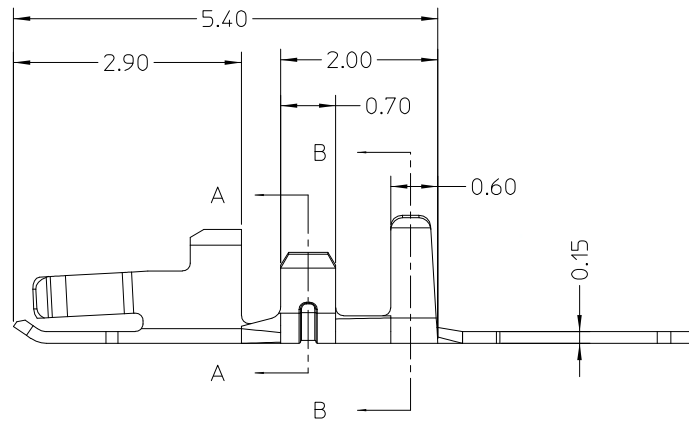
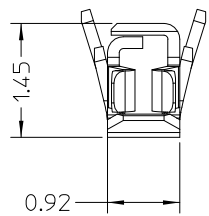


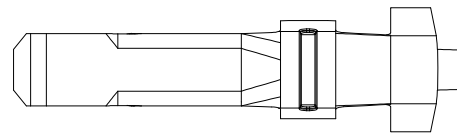
SECTION A-A



SECTION B-B



3D VIEW



NOTES:

- 1.MATERIAL: COPPER ALLOY
- 2.TERMINAL PLATING:
MATTE TIN PLATED ON CRIMP AREA
1-3 MICROMETER/40~120 MICROINCH NICKEL UNDERPLATED OVER ALL
- 3.WIRE RANGE: 26-30AWG

RoHS Compliant

TOLERANCES ARE

MORETHANALL
PCB CONNECTORS
Cable ASSEMBLIES

煜倫股份有限公司

www.morethanall.com

DRAWING BY CY

CHECKED BY GENIUS

UNIT / mm

SCALE 1 : 1

DATE

SIZE A4

X, ±
.X ± 0.25
.XX ± 0.20
.XXX ±
ANG ±

P PROJECTION

照片框

ORDER INFORMATION

MCL125-T-26-LF

SERIES

LEADFREE

26~30 AWG

TERMINAL

DESCRIPTION: 1.25MM PITCH, CRIMP TERMINAL