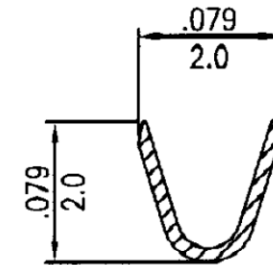
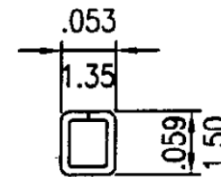
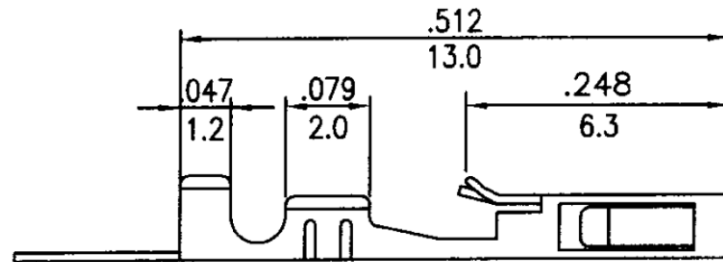
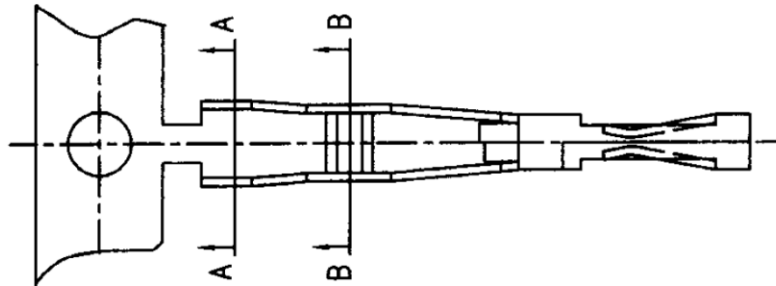
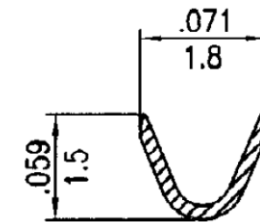


- \* Material: Phos bronze
- \* Finished: Tin-plated
- \* Wire range: AWG#24~#28
- \* Insulation O.D: 1.60mm(max)
- \* Thickness: 0.2mm
- \* Q'TY: 15,000pcs/reel

inches  
mm



A-A SECTION



B-B SECTION

RoHS Compliant

TOLERANCES ARE

**MORETHANALL**  
PCB CONNECTORS  
Cable ASSEMBLIES

煜倫股份有限公司

www.morethanall.com

DRAWING BY CY

CHECKED BY GENIUS

UNIT / mm

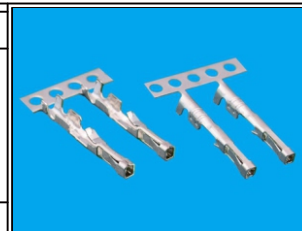
SCALE 1 : 1

DATE

SIZE A4

P PROJECTION

X. ±  
.X ±  
.XX ±  
.XXX ±  
ANG ±



ORDER INFORMATION

MCB-T-24-LF  
SERIES | LEADFREE  
24~28 AWG  
TERMINAL

DESCRIPTION: