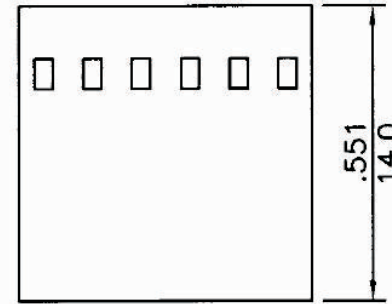
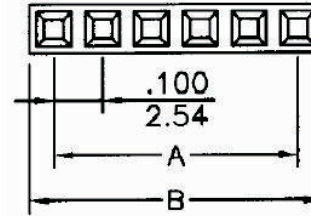
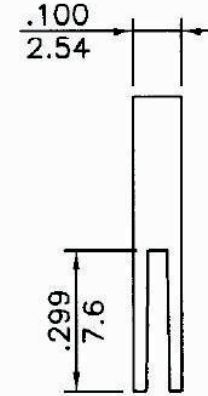


- \* Poles: 2 ~ 40
  - \* Material: PBTP UL94V-0 BLACK
- Specifications
- \* Current rating: 3A AC, DC
  - \* Voltage rating: 250V AC, DC
  - \* Temperature range: -25°C ~ +85°C
  - \* Insulation resistance: 1,000M Ω min.
  - \* Withstand voltage: 1,000V AC/minute



inches  
mm



MCAF-H-1Xxx-LF  
LEADFREE  
RoHS Compliant

CIRCUITS	DIMENSION		CIRCUITS	DIMENSION	
	A	B		A	B
2	0.100(2.54)	0.200(5.08)	15	1.400(35.54)	1.500(38.10)
3	0.200(5.08)	0.300(7.62)	16	1.500(38.10)	1.600(40.64)
4	0.300(7.62)	0.400(10.16)	17	1.600(40.64)	1.700(43.18)
5	0.400(10.16)	0.500(12.70)	18	1.700(43.18)	1.800(45.72)
6	0.500(12.70)	0.600(15.24)	19	1.800(45.72)	1.900(48.26)
7	0.600(15.24)	0.700(17.78)	20	1.900(48.26)	2.000(50.80)
8	0.700(17.78)	0.800(20.32)	21	2.000(50.80)	2.100(53.34)
9	0.800(20.32)	0.900(22.86)	22	2.100(53.34)	2.200(55.88)
10	0.900(22.86)	1.000(25.40)	23	2.200(55.88)	2.300(58.42)
11	1.000(25.40)	1.100(27.94)	24	2.300(58.42)	2.400(60.96)
12	1.100(27.94)	1.200(30.48)	25	2.400(60.96)	2.500(63.50)
13	1.200(30.48)	1.300(33.02)	30	2.900(73.66)	3.000(76.20)
14	1.300(33.02)	1.400(35.54)	40	3.900(99.06)	4.000(101.60)

**MORETHANALL**  
CONNECTORS  
ASSEMBLIES

PART NO. MCAF-H-1Xxx

DWG NO. MCAF-H-1Xxx

FILE NO.

CHECKED BY CY

DRAWING BY

TOLERANCES ARE

.X ± 0.2  
.XX ±  
.XXX ±  
AWG

DESCRIPTION:

煜倫股份有限公司

UNIT / mm

SCALE 1:1

PROJECTION



AREA

REVISIONS

HK

DATE