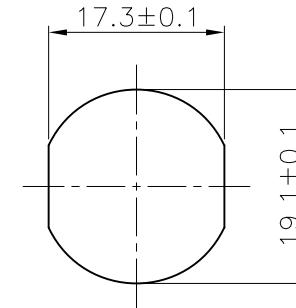


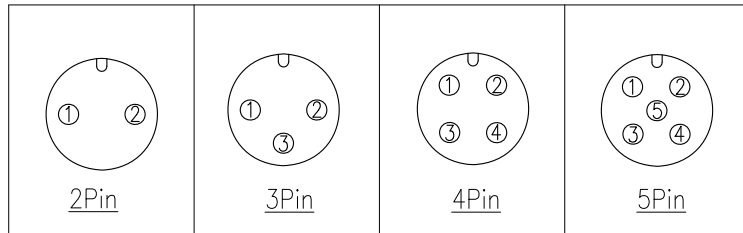
SEC:A-A

Specifications:

Current Rating:10A AC/DC
 Voltage Rating:60V AC/DC
 Contact Resistance:5m ohm. Max.
 Insulation Resistance:100M ohm. Min.
 Withstanding Voltage:500V AC/Minute
 Waterproof rate:IP68
 Operating Temperature Range:-40°C~+100°C
 Material and Finish



M19 Recommended Panel CUT-Out Thickness:4.0mm



ITEM	Description	Material	Remark	Q'TY
1	Insulator	Nylon	UL94V-0 Black	1
2	Terminal	Copper Alloy	Gold Plated 3u"	2~5
3	Shell	Copper Alloy	Nickel Plated 60u"	1
4	Seal ring	Silicone	Red	2
5	Nut	Copper Alloy	M19 Nickel Plated 60u"	1

RoHS Compliant

TOLERANCES ARE

MORETHANALL
 PCB CONNECTORS
 Cable ASSEMBLIES

煜倫股份有限公司

www.morethanall.com

DRAWING BY CY

CHECKED BY GENIUS

UNIT / mm

SCALE 1:1

DATE

SIZE A4

X. ±
 .X ± 0.30
 .XX ± 0.20
 .XXX ±
 ANG ±

P PROJECTION

照片框

ORDER INFORMATION

M16-PSPBNO-xx-LF
 SERIES | | | | LEADFREE
 | | | | 02-05WAY
 MALE | | NUT | |
 | | PANEL BACK
 | | SOLDER

DESCRIPTION: M16 A CODE PLUG STRAIGHT TYPE