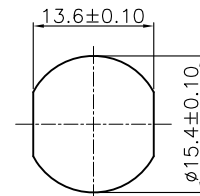
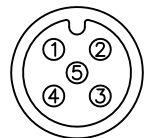


PIN OUT:

P1	Color	Plating
1	Brwon	Tin
2	White	Tin
3	Blue	Tin
4	Black	Tin
5	Grey	Tin



Recommended Panel Cut-Out Thickness:4.0Max.



Pin Assignments Front View

ITEM	DESCRIPTION	Q'TY
1	M12 A Code Socket 5Pin Rear Fastened Solder Type	1
2	UL1569 22AWG Wire Color:XX	5
3	Heat Shrink Tube OD:2.0 L=10mm Color:Black	5

RoHS Compliant

TOLERANCES ARE

**MORETHANALL**  
PCB CONNECTORS  
Cable ASSEMBLIES

煜倫股份有限公司

www.morethanall.com

DRAWING BY CY

CHECKED BY GENIUS

UNIT / mm

SCALE 1 : 1

DATE

SIZE A4

PPOJECTION

X. ±  
.X ± 0.50  
.XX ± 0.30  
.XXX ±  
ANG ±

照片框

ORDER INFORMATION

M12X1-050022W1PANO-F50C

SERIES

05 WAY

WIRE  
22 AWG

500mm

FEMALE

NUT+O-RING

PANEL FRONT

DESCRIPTION: M12 A CODE 5PIN SOCKET WIRE HARNESS