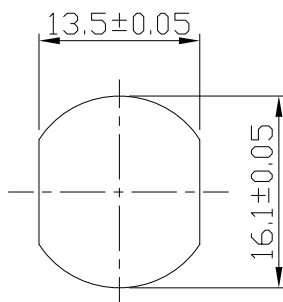


7	Glue	Epoxy Color: Black	
6	O-Ring	Silicone Color: Black	1
5	Hex Nut	Copper Alloy Finish: Ni Plated	1
4	O-Ring	Silicone Color: Red	1
3	Housing	Thermoplastic Color: Black	1
2	Contacts	Copper Alloy Finish: Au Plated	12
1	Metal Body	Copper Alloy Finish: Ni Plated	1
Item	Part Name	Material / Finish	Qty



Recommend  
Panel Cut-Out

Notes: (Unless Otherwise Specified)

1. Waterproof Rate: IP68.
2. Recommend Panel Thickness: 0.8 to 3.0 mm.
3. Recommend Torque: 9~10 Kgf-cm
4. Durability: 100 Cycles Min.
5. DWV: 500 Vrms.
6. Rated Voltage: 30V AC/DC.
7. Insulation Resistance: 100 M $\Omega$  Min.
8. RoHS Compliant.

RoHS Compliant

TOLERANCES ARE

**MORETHANALL**  
PCB CONNECTORS  
Cable ASSEMBLIES  
煜倫股份有限公司

DRAWING BY CY

CHECKED BY GENIUS

UNIT / mm SCALE 1 : 1

DATE

SIZE A4

X,  $\pm$   
.X  $\pm$  0.50  
.XX  $\pm$  0.20  
.XXX  $\pm$  0.05  
ANG  $\pm$  1°

PPOJECTION

照片框

ORDER INFORMATION

M12-SSPANO16-12-LF  
SERIES | | | | LEADFREE  
FEMALE | | | | 12WAY  
SOLDER | | | | 16.1 DIA  
RING | | | |  
NUT | | | |  
PANEL FRONT

DESCRIPTION: M12 A-Coding 1.5A 12P Panel Rear Mount Female Solder

www.morethanall.com