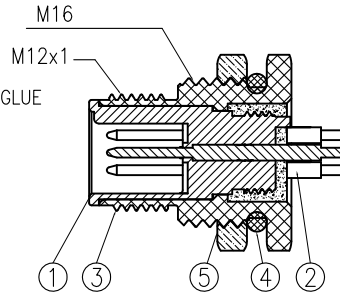


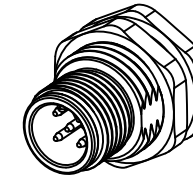
WITH LIQUID GLUE



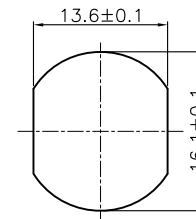
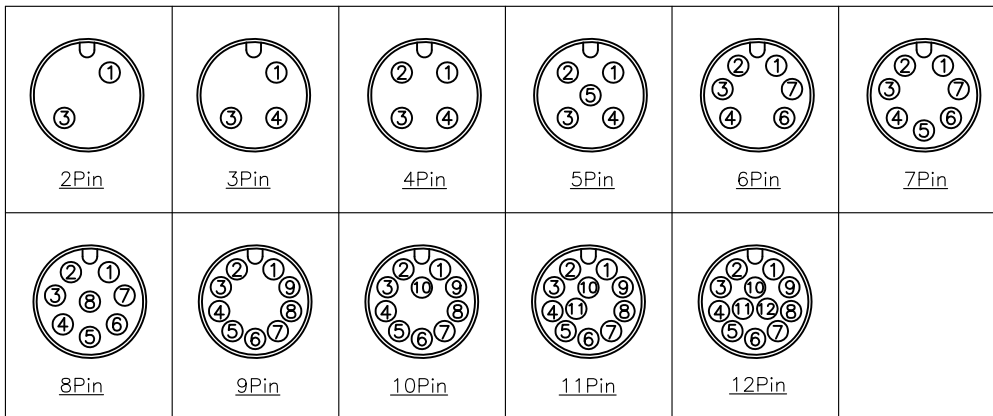
Section A-A

Specifications:

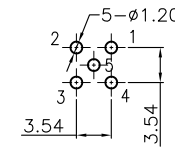
Current Rating:4A(2~5P);2A(6~8P);1.5A(9~12P)AC/DC
 Voltage Rating:250V(2~4P);60V(5P);30V(6~12P)AC/DC
 Contact Resistance:5m ohm. Max.
 Insulation Resistance:100M ohm. Min.
 Withstanding Voltage:500V AC/Minute
 Operating Temperature Range:-40°C ~ +100°C
 Waterproof Rate:IP67
 Material and Finish



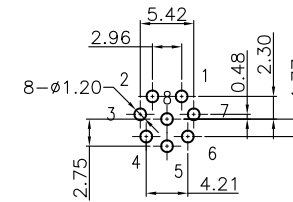
Pin Assignments Front View



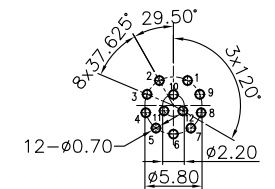
M16 Recommended Panel CUT-Out
 Thickness 4.0 Max.



2~5P Recommended PCB Layout
 TOL:±0.05mm



6~8P Recommended PCB Layout
 TOL:±0.05mm



9~12P Recommended PCB Layout
 Tolerance:±0.05mm

ITEM	Description	Material	Remark	Q'TY
1	Insulator	Nylon	UL94V-0 Black	1
2	Terminal	Copper Alloy	Gold Plated 1u"	2~12
3	Shell	Zinc Alloy	Nickel Plated 60u"	1
4	Seal ring	Silicone	Red	1
5	Nut	Copper Alloy	PG9 or M16 Nickel Plated 60u"	1

RoHS Compliant

TOLERANCES ARE



煜倫股份有限公司

www.morethanall.com

DRAWING BY CY

CHECKED BY GENIUS

UNIT / mm SCALE 1 : 1

DATE

SIZE A4

X, ±
 .X ± 0.30
 .XX ± 0.20
 .XXX ±
 ANG ±

PJECTION

照片框

ORDER INFORMATION

M12-PDPBNO16-xx-LF
 SERIES | | | | | LEADFREE
 | | | | | 02-12WAY
 | | | | | 16.1 DIA
 MALE | | | | | NUT
 DIP 180° | | | | | PANEL BACK

DESCRIPTION: M12 A CODE PLUG STRAIGHT DIP TYPE