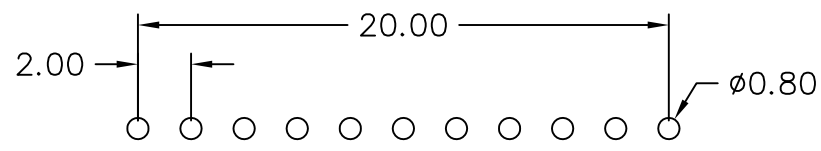
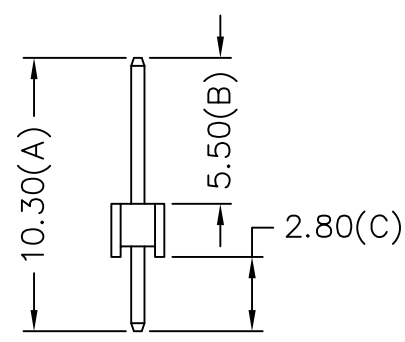
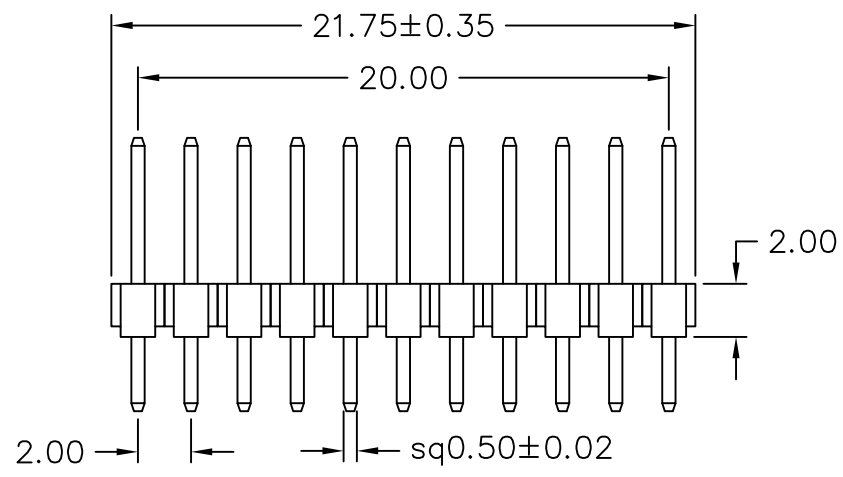


MATERIAL
Contact Pin : Brass

SPECIFICATION
Current Rate : 1 AMP
Insulation Resistance : 5000MΩMin. at DC 500V
Contact Resistance : 20mΩMax. at DC 100mA
Dielectric Voltage : AC 500V for one minute



M-D5528-1X11-LF
LEADFREE
RoHS Compliant



PART NO. M-D5528-1X11
DWG NO. M-D5528-1X11

CHECKED BY CY
DRAWING BY

TOLERANCES ARE
X ±
.X ± 0.3
.XX ± 0.2
.XXX ±
ANG ± 3°

DESCRIPTION: PIN HEADER 2.00*2.00mm
STRAIGHT TYPE, SINGLE ROW

煜倫股份有限公司

UNIT / mm SCALE 1:1

PROJECTION

| | | |
|------|-----------|------|
| AREA | REVISIONS | DATE |
|------|-----------|------|