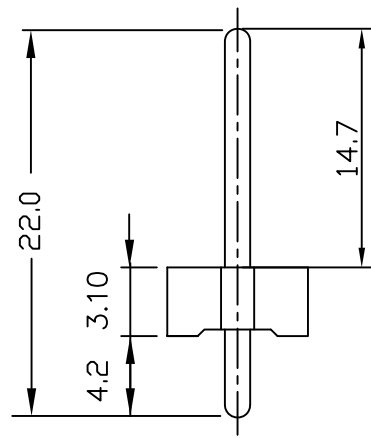
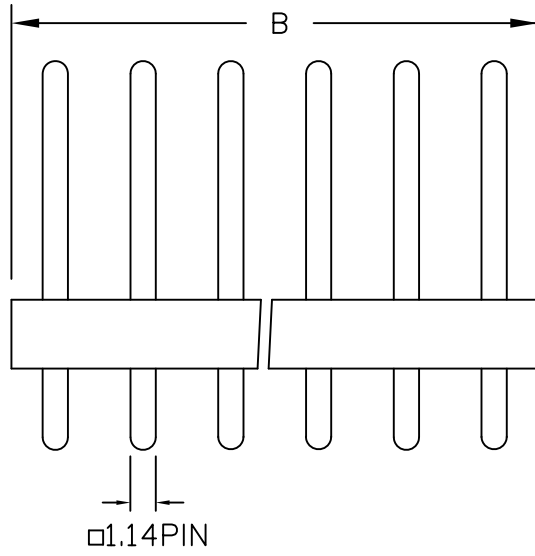


PCB LAYOUT COMPONENT SIDE



SPECIFICATIONS

Electrical

- Current Rating: 5A AC, DC
- Voltage Rating: 250V AC, DC
- Operating Temp.: -25°C ~ +85°C
- Insulation Resistance: 1000MΩ / min.
- Dielectric Withstanding Voltage: 1500V AC / min.
- Contact Resistance: 10mΩ / max.

Material

Material: Nylon66, UL94V-2

KXR-D22014742-xx-LF
 02-16WAY LEADFREE

RoHS Compliant

Poles	Dimension mm (in.)	
	A	B
2	3.96	8.00
3	7.92	12.00
4	11.88	15.90
5	15.84	20.00
6	19.80	24.00
7	23.76	27.90
8	27.72	31.90
9	31.68	35.80
10	35.64	39.90
11	39.60	43.90
12	43.56	47.70
13	47.52	51.80
14	51.48	55.70
15	55.44	59.70
16	59.40	63.80



煜倫股份有限公司

PART NO. KXR-D22014742-xx		CHECKED BY CY	TOLERANCES ARE .X ± 0.2 .XX ± .XXX ± AWG	DESCRIP TION: 3.96mm Wire-to-Board Header Dip 180° Type
DWG NO. KXR-D22014742-xx				
FILE NO.		DRAWING BY	PROJECTION	AREA
UNIT / mm	SCALE 1:1			
				DATE