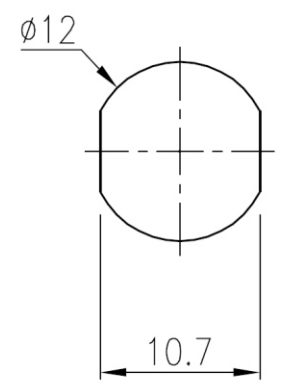
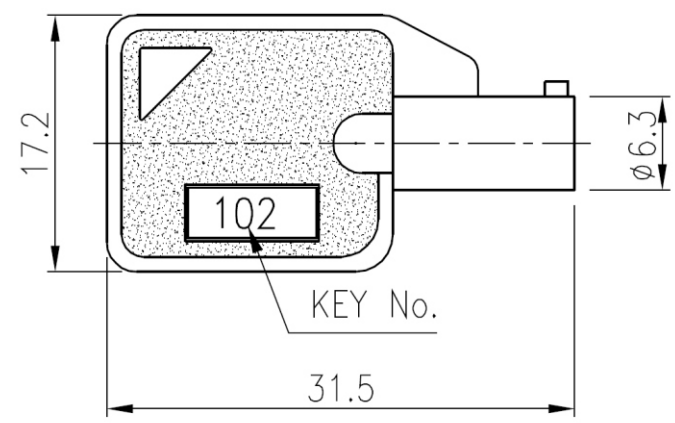


NOTES:

- * Zinc alloy die cast housing and cylinder, chrome plated.
- * Zinc alloy keys, chrome plated.
- * Silver plated contacts and terminals.
- * 2 Positions (off-on) 2 Terminals.
- * 1 Combination available.
- * Material conform to 2002/95/EC (RoHS) requirement.



Recommended hole size

KSW12-T-02-LF
LEADFREE
RoHS Compliant



PART NO. **KSW12-T-02**

DWG NO. **KSW12-T-02**

FILE NO.

UNIT / mm

SCALE 1:1

CHECKED BY CY

DRAWING BY

PROJECTION

TOLERANCES ARE

.X ± 0.2
 .XX ±
 .XXX ±
 AWG

DESCRIP TION:			
AREA	REVISIONS	HK	DATE

煜倫股份有限公司