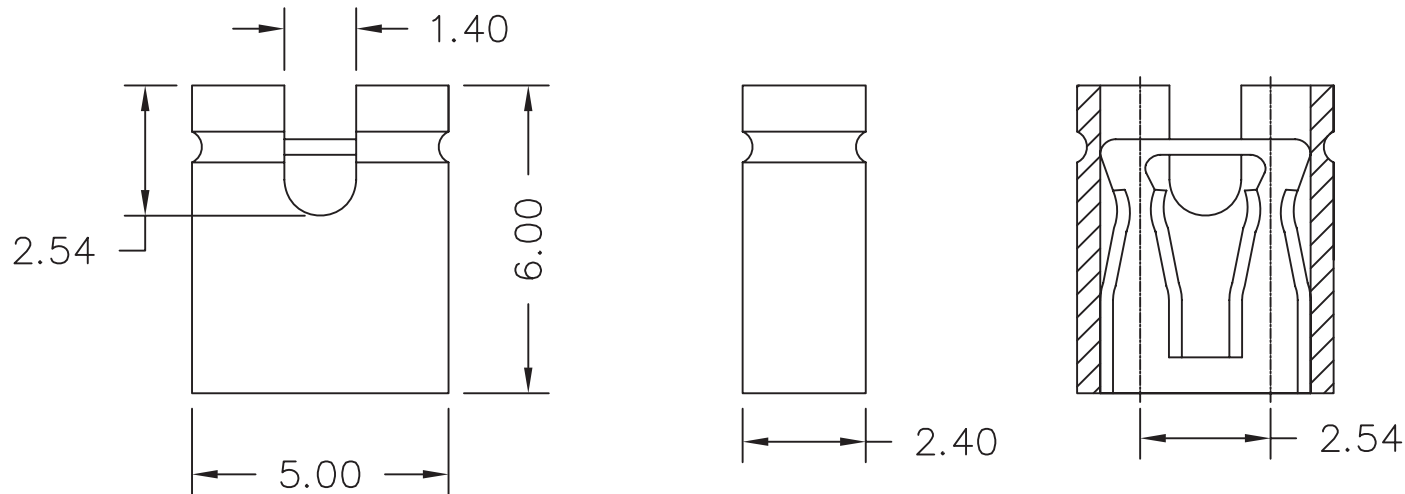


MATERIAL

Insulator : PBT+30% Glass fiber
 Contact Pin : Brass

SPECIFICATION

Current Rate : 3 AMP
 Insulation Resistance : 5000MΩMin. at DC 500V
 Contact Resistance : 20mΩMax. at DC 100mA
 Dielectric Voltage : 1000V AC for one minute
 Operation Temperature : -55°C to +105°C



RoHS Compliant

TOLERANCES ARE

MORETHANALL
 PCB CONNECTORS
 Cable ASSEMBLIES

DRAWING BY CY

CHECKED BY GENIUS

UNIT/mm

SCALE 1:1

DATE

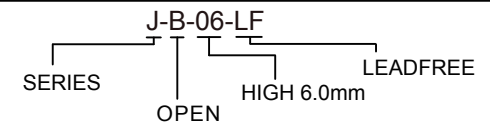
SIZE A4

PJECTION

X. ±
 .X ± 0.30
 .XX ± 0.20
 .XXX ±
 ANG ±



ORDER INFORMATION



煜倫股份有限公司

www.morethanall.com

DESCRIPTION: MINI JUMPER 2.54mm OPEN 6.0mm