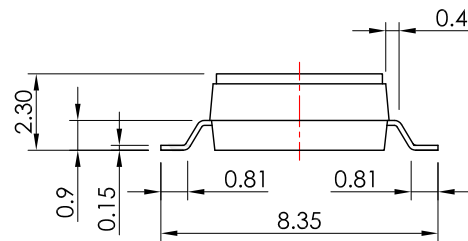
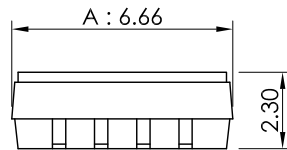
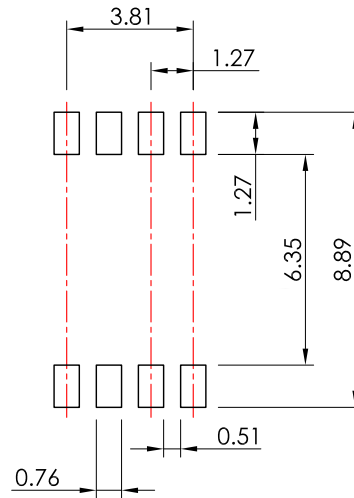
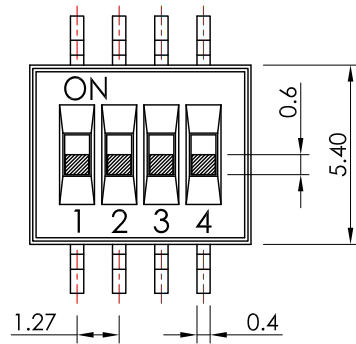
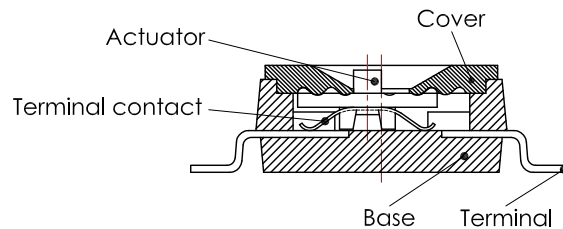
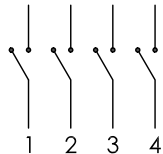


P.C.B. LAYOUT



SCHEMATIC



MATERIAL

Base: PPS (UL-94V-0), black.
Cover: PPS (UL-94V-0), black.
Actuator: Nylon (UL-94V-0), white.
Movable: Beryllium, Gold plated.
Terminal contact: Brass, Gold plated.
Terminal: Brass, Gold plated. Δ

SPECIFICATION Δ

Rating: 25mA at 24V DC.
 10mA at 50V DC.

Non-switching rating: 100mA at 50V DC.

Contact resistance: 100m Ω Max.(initial)
 100m Ω Max.(after life)

Insulation resistance: 200M Ω at 100V DC Min.(initial)
 100M Ω at 100V DC Min.(after life)

Withstand voltage: 300V AC RMS Min.

Operating temperature: -40°C ~ +85°C.

Switch capacitance: 5pF at 1 MHz.

Operating force: 800g Max.

Mechanical life: 1,000 Cycles Min.

Soldering temperature: 250°C Max. for 3 seconds.

Soldering time: 1 time only.

Note1: Unwashable, don't be immersed by epoxy and organic solvent.

Note2: Please do not scale the drawing comparing to real product and kindly measure the size of real product.

STORAGE METHOD

After opening the bag of the switches, please include a desiccant into the bag, then seal it to avoid product oxidation.

打開包裝袋後，請在袋中加入乾燥劑並「密封」，避免產品氧化。

RoHS Compliant

TOLERANCES ARE

MORETHANALL
 PCB CONNECTORS
 Cable ASSEMBLIES

DRAWING BY CY

X. \pm

CHECKED BY GENIUS

.X \pm 0.30

UNIT / mm

SCALE 1:1

.XX \pm 0.20

DATE

.XXX \pm

ANG \pm

SIZE A4

PJECTION

照片框

ORDER INFORMATION

HSW-SV23W8-04-LF
 SERIES | | | | LEADFREE
 | | | | 04 WAY
 | | | | WIDTH 8.3mm
 | | | | HIGH 2.3mm
 | | | | 180°SMT
 | | | | FEMALE

煜倫股份有限公司

www.morethanall.com

DESCRIPTION: