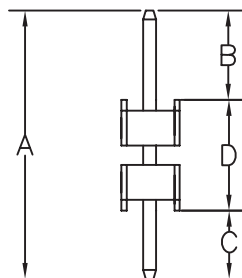
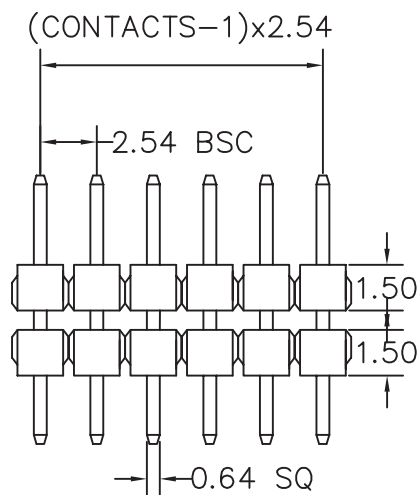


RECOMMENDED P.C.B LAYOUT



A: 25.60 mm B: 3.30 mm C: 19.00 mm D: 3.30 mm

CONTACTS	1X21
1X2	1X22
1X3	1X23
1X4	1X24
1X5	1X25
1X6	1X26
1X7	1X27
1X8	1X28
1X9	1X29
1X10	1X30
1X11	1X31
1X12	1X32
1X13	1X33
1X14	1X34
1X15	1X35
1X16	1X36
1X17	1X37
1X18	1X38
1X19	1X39
1X20	1X40

MATERIAL

HOUSING : THERMOPLASTIC UL94V-0

CONTACT : COPPER ALLOYS

SPECIFICATION

CURRENT: 3A

OPERATING TEMPERATURE: -55°C TO +105°C

CONTACT RESISTANCE : 20 MILLIOHMS MAX

INSULATION RESISTANCE : 1000 MEGAOHMS MIN

WITHSTANDING VOLTAGE : AC 1000V RMS

RoHS Compliant

TOLERANCES ARE

MORETHANALL
PCB CONNECTORS
Cable ASSEMBLIES
煜倫股份有限公司

DRAWING BY CY

X. ±

CHECKED BY GENIUS

.X ±

UNIT/ mm SCALE 1:1

.XX ±

DATE

.XXX ±

ANG ±

www.morethanall.com

SIZE A4

PPOJECTION

照片框

ORDER INFORMATION

HSB-D25619033-1Xxx-LF
SERIES | LEADFREE
1X02:02WAY
1X40:40WAY
DIP 3.3mm
CONTACT 19.0mm
TOTAL 25.6mm
DIP180°

DESCRIPTION: