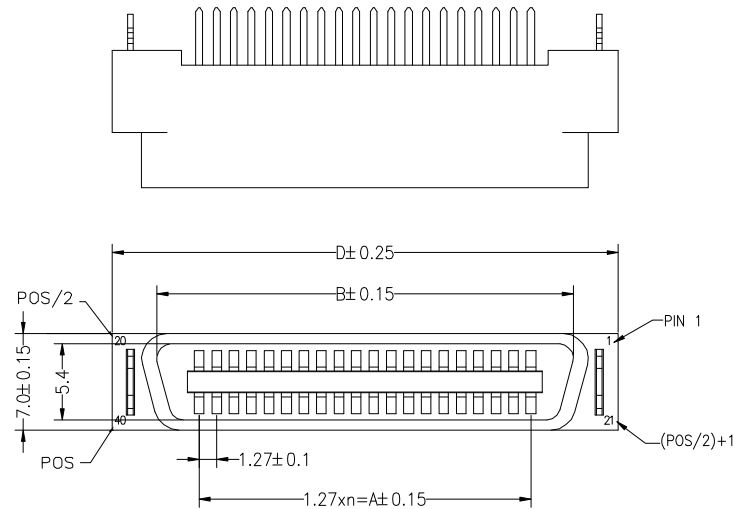


SPECIFICATIONS

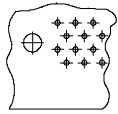
Rated Current:1.0AMP
 Contact Resistance:35mΩ Max
 Withstand Voltage:500V AC/DC
 Insulation Resistance:500MΩ Min
 Operation Temperature:-40°C to +105°C

Contact Material:Phosphor bronze
 Boardlocks:Brass
 Contact Plating:Au or Sn Over Ni
 Insulator Material:Polyester(UL94V-0)
 Standard: LCP
 Max.Processing Temp: 230°C for 30-60 seconds
 (260°C for 10 seconds)

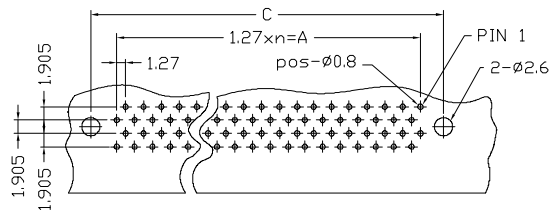


| | | | | | |
|-----|-------|-------|-------|-------|----|
| 120 | 74.93 | 80.74 | 84.90 | 87.55 | 59 |
| 100 | 62.23 | 68.04 | 72.20 | 74.85 | 49 |
| 80 | 49.53 | 55.34 | 59.50 | 62.13 | 39 |
| 68 | 41.91 | 47.72 | 51.88 | 54.53 | 33 |
| 60 | 36.83 | 42.64 | 46.80 | 49.45 | 29 |
| 50 | 30.48 | 36.29 | 40.45 | 43.10 | 24 |
| 40 | 24.13 | 29.94 | 34.10 | 36.70 | 19 |
| 30 | 17.78 | 23.59 | 27.75 | 30.35 | 14 |
| 20 | 11.43 | 17.24 | 21.40 | 24.00 | 9 |
| POS | A | B | C | D | n |

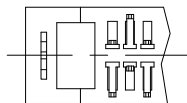
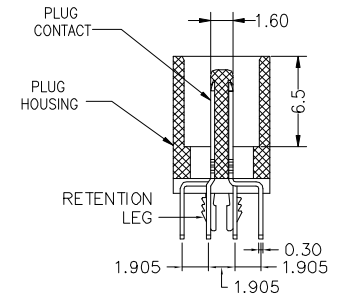
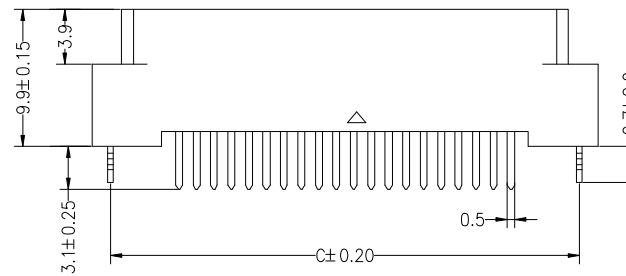
RECOMMENDED PC BOARD MOUNTING DIMENSIONS COMPONENT SIDE



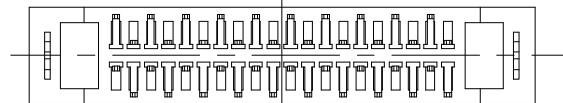
FOR 30.50 POSITIONS ONLY



FOR 20, 40, 60, 68, 80, 100, 120 POSITIONS ONLY



FOR 30.50 POS



FOR 20, 40, 60, 68, 80, 100, 120 POS



煜倫股份有限公司

www.morethanall.com

RoHS Compliant

DRAWING BY CY
 CHECKED BY GENIUS
 UNIT / mm SCALE 1 : 1
 DATE
 SIZE A4 PPROJECTION

TOLERANCES ARE

X, ±
 .X ± 0.30
 .XX ± 0.20
 .XXX ± 0.10
 ANG ± 3°

照片框

ORDER INFORMATION

HPCP-PDZ-xxx-LF
 SERIES | | LEADFREE
 | | 020-120 WAY
 | | CLIP
 | | DIP 180°
 MALE

DESCRIPTION: SCSI Male NPin All-Plastic 180°