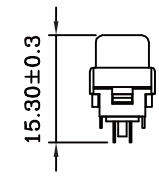
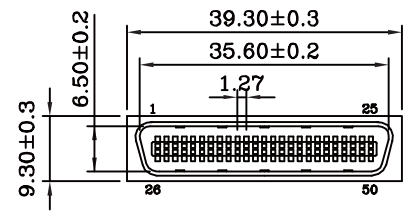
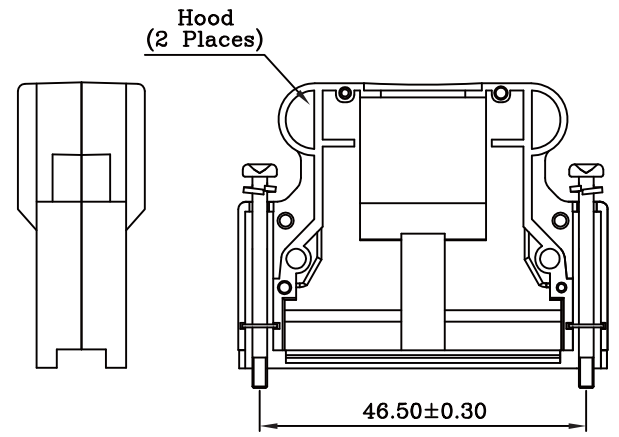
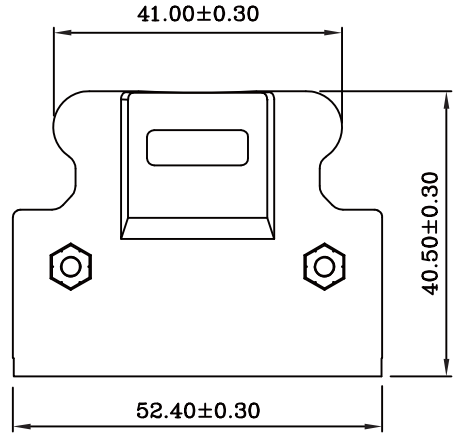
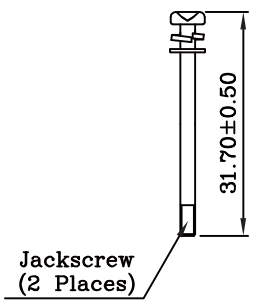
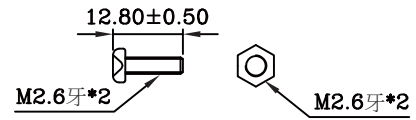
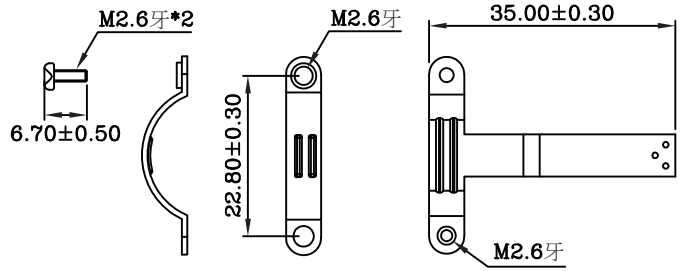
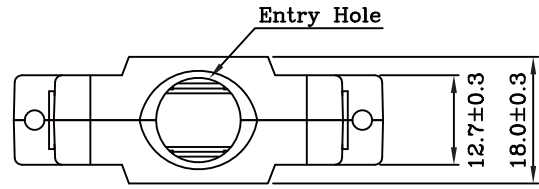
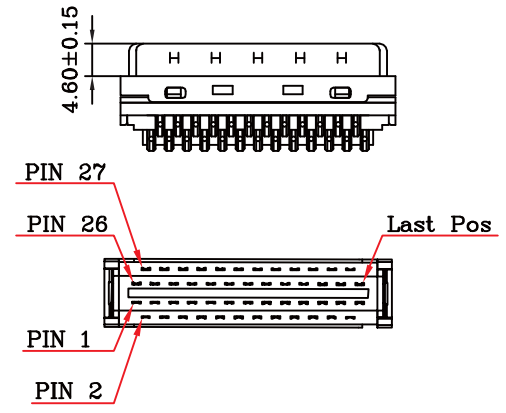


● MATERIALS: (RoHS Compliant)

- Hood: Plastic Thermoplastic PBT UL 94V-0
- Latch & Hood: Plastic Thermoplastic PBT UL 94V-0
- Latch: Stainless Steel
- Jackscrews: Steel Nickel Plated Over Copper
- Hex Nuts: Steel Nickel Plated Over Copper
- Cable Clipper: Steel Nickel Plated Over Copper
- Screws: Steel Nickel Plated Over Copper



Screw



RoHS Compliant

TOLERANCES ARE



DRAWING BY CY
 CHECKED BY GENIUS
 UNIT / mm SCALE 1 : 1
 DATE

X. ±
 .X ±
 .XX ±
 .XXX ±
 ANG ±

煜倫股份有限公司

www.morethanall.com

SIZE A4 PROJECTION

照片框

ORDER INFORMATION

HPC-PSHM-050-LF
 SERIES | LEADFREE
 | 50 WAY
 | MALE SCREW
 HOOD
 SOLDER
 MALE

DESCRIPTION: 1.27mm(.050") 50Pos Hood Straight Exit Split Type