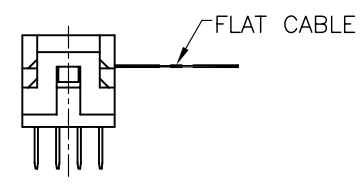
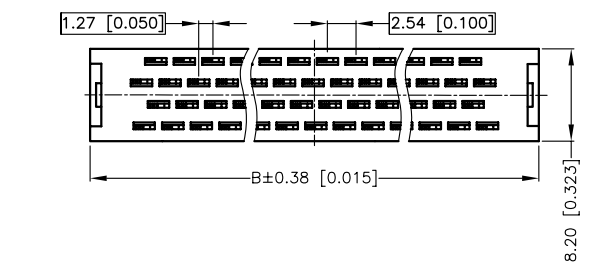


MATERIALS

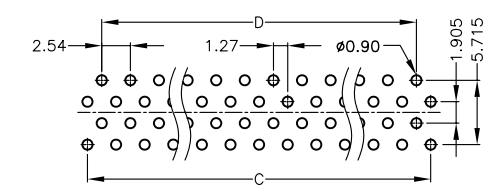
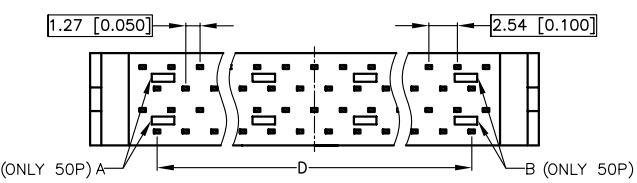
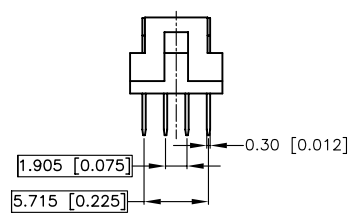
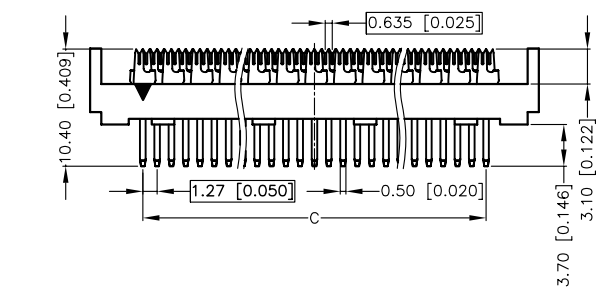
1. HOUSING : THERMOPLASTIC (UL 94V-0).
2. TERMINAL : COPPER ALLOY (t=0.30mm)
TIN PLATING ON SOLDER TAIL
UNDER PLATING NICKEL.

SPECIFICATION

1. CURRENT RATING : 0.5 AMP. MAX.
2. DIELECTRIC WITHSTANDING VOLTAGE :
300V AC R.M.S. FOR ONE MINUTE.
3. INSULATION RESISTANCE : 1000M OHMS MIN.
AT 50V DC.
4. OPERATING TEMPERATURE : -40°C TO +85°C.



HIP40-C2Sxx-xxx-LF
LEADFREE
BLANK:BLACK
BL:BLUE
RoHS Compliant



RECOMMEND P.C.B. LAYOUT
TOLERANCE ±0.05
TOP VIEW

HIP40-C2SBL-026	BLUE	37.85 [1.490]	39.85 [1.569]	30.48 [1.200]	27.94 [1.100]
HIP40-C2S-050	BLACK				
HIP40-C2SBL-034	BLUE	27.69 [1.090]	29.69 [1.169]	20.32 [0.800]	17.78 [0.700]
HIP40-C2S-034	BLACK				
HIP40-C2SBL-030	BLUE	25.15 [0.990]	27.15 [1.069]	17.78 [0.700]	15.24 [0.600]
HIP40-C2S-030	BLACK				
HIP40-C2SBL-026	BLUE	22.61 [0.890]	24.61 [0.969]	15.24 [0.600]	12.70 [0.500]
HIP40-C2S-026	BLACK				
P/N	COLOR	A	B	C	D

MORETHANALL
CONNECTORS
ASSEMBLIES

煜倫股份有限公司

PART NO. HIP40-C2Sxx-xxx		CHECKED BY CY	TOLERANCES ARE .X ± 0.2 .XX ± .XXX ± AWG	DESCRIPTION: DIP PLUG IDC ROHS 0.635 (4R) KIT		
DWG NO. HIP40-C2Sxx-xxx						
FILE NO.		DRAWING BY	AREA	REVISIONS	HK	DATE
UNIT / mm	SCALE 1:1	PROJECTION				