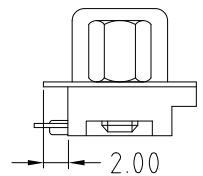
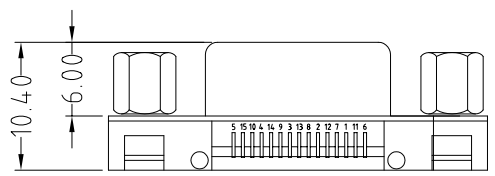


ELECTRICAL CHARACTERISTICS

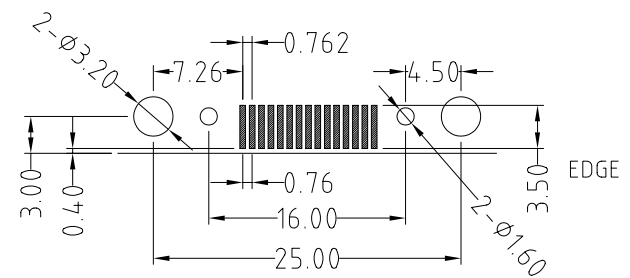
Contact Current Rating:1Amperes.
 Dielectric Withstanding Voltage:AC 500V at sea level.
 Insulation Resistance:1000Megohms Min.
 Contact Resistance:30Milliohms Max.
 Operation Temperature : -55°C to +105°C.

Material

Contact :Copper Alloy.
 Insulator:PA6T ,
 Shell: SPCC.
 Z-Piece: Copper Alloy.



RECOMMEND PCB LAYOUT



HDW-SNZ1J-15-LF
LEADFREE

RoHS Compliant

MORETHANALL
CONNECTORS
ASSEMBLIES

PART NO. HDW-SNZ1J-15

DWG NO. HDW-SNZ1J-15

CHECKED BY CY

TOLERANCES ARE

DESCRIP TION:

FILE NO.

DRAWING BY

.X ± 0.2
.XX ±
.XXX ±
AWG

AREA	REVISIONS	HK	DATE
------	-----------	----	------

焯倫股份有限公司

UNIT / mm

SCALE 1:1

PROJECTION