

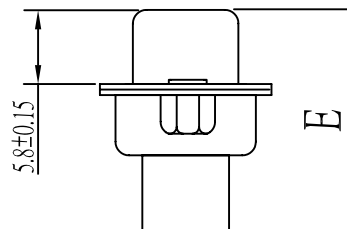
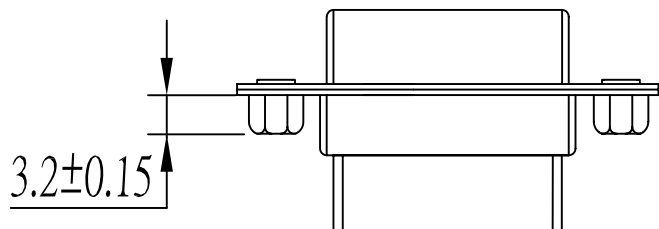
Note:

1.Material:

- 1.1 Insulator: High temperature thermoplastic with g.f,UL94v-0
- 1.2 Contact: Copper alloy,t=0.20mm
- 1.3 Shell: Spcc,t=0.30mm

2.Specification:

- 2.1 Current rating: 1 A Max.
- 2.2 Dielectric withstanding voltage: 750 V(ac) for 1 min.
- 2.3 Contact resistance: 30 mΩ Max.
- 2.4 Insulation resistance: 1000 MΩ Min.
- 2.5 Total mating force: 10.0 Kgf Max.
- 2.6 Total unmating force: 1.5 Kgf Min.
- 2.7 Temperature range: -55°C~85°C



PART NO	A±0.25	B±0.20	C±0.20	D±0.20	E±0.30	F±0.25	G±0.25	H±0.05	I±0.10	J±0.25	K±0.25
HDC-SN-15	30.81	24.99	16.33	7.9	16.0		12.55	2.29	3.96		
HDC-SN-26	39.25	33.32	25.25	7.9	16.0		12.55	2.29	3.96		
HDC-SN-44	53.10	47.10	38.38	7.9	16.0		12.55	2.29	3.96		
HDC-SN-62	69.50	63.50	54.84	7.9	16.0		12.55	2.29	3.96		
HDC-SN-78	67.10	61.00	52.43	10.74	16.0		15.3	2.41	6.24		

RoHS Compliant

TOLERANCES ARE

MORETHANALL
PCB CONNECTORS
Cable ASSEMBLIES

煜倫股份有限公司

www.morethanall.com

DRAWING BY CY

CHECKED BY GENIUS

UNIT / mm

SCALE 1 : 1

DATE

SIZE A4

X. ±
.X ±
.XX ±
.XXX ±
ANG ±

PPOJECTION

照片框

ORDER INFORMATION

HDC-SN-xx-LF
SERIES | T LEADFREE
| T 15-78 WAY
NUT
FEMALE

DESCRIPTION: HI DEN D-SUB CRIMP FEMALE