

NOTES:

1. ALL DIMENSIONS ARE "mm".
2. THE PRODUCT MUST BE COMPLY WITH THE DIRECTIVE OF ROHS.

ELECTRICAL TESTING:

1. 100% OPEN/SHORT TEST
2. CONTACT RESISTANCE: 5Ω Max
3. INSULATION RESISTANCE: 20MΩ Min

NO.	ITEM.	DESCRIPTION	Q'TY
1	WIRE:	UL2678 #30 10C GRAY FLAT CABLE	1PCS
2	DIP:	PH:1.27 2-piece P/N: HAP-C2-010	2PCS

RoHS Compliant

TOLERANCES ARE

MORETHANALL
PCB CONNECTORS
Cable ASSEMBLIES

DRAWING BY CY

X. ± 0.20

CHECKED BY GENIUS

.X ± 0.15

UNIT / mm SCALE 1 : 1

.XX ± 0.10

DATE

.XXX ±

ANG ± 2°

照片框

ORDER INFORMATION

HAP2X2-1010BS-M9C-LF

SERIES

LEADFREE

90mm

MALE TO MALE

BOTH SIDE

10 TO 10 WAY

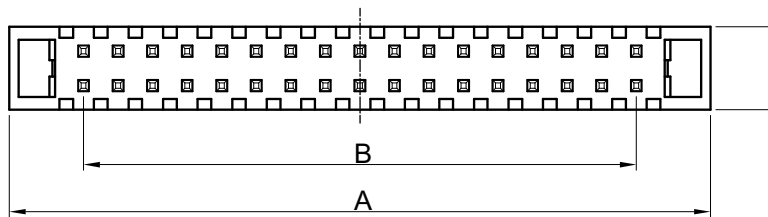
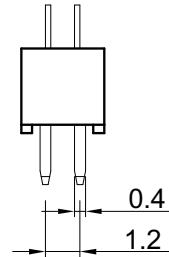
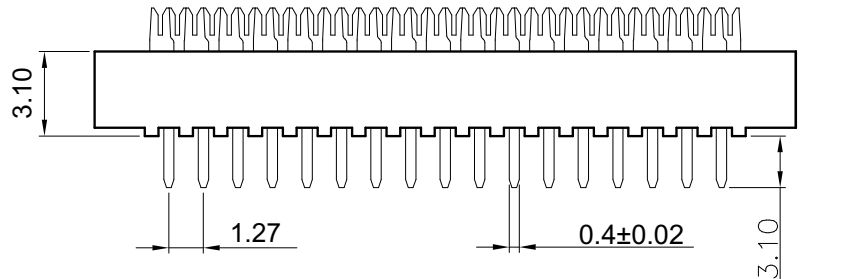
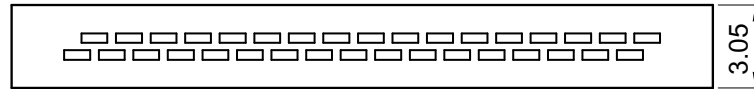
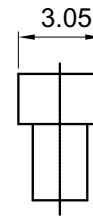
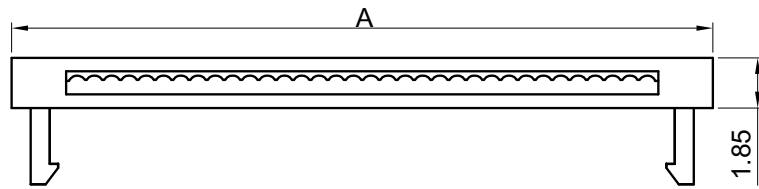
煜倫股份有限公司

www.morethanall.com

SIZE A4

PJECTION

DESCRIPTION:

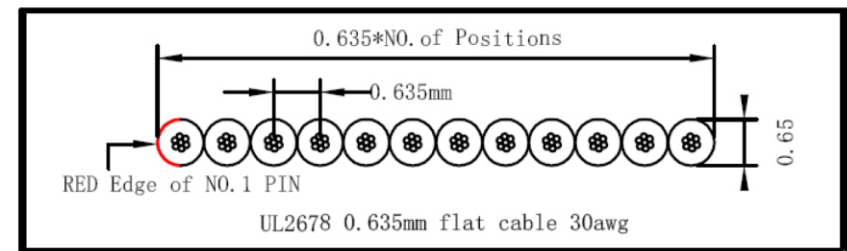


$A = 1.27 * \text{NO of Positions} / 2 + 4.19$
 $B = 1.27 * \text{NO of Positions} / 2 - 1.27$

NOTES:

Current Rating : 1.0AMP
 Contact Resistance : 20mΩ MAX
 Withstand Voltage : 250V AC/DC
 Insulation Resistance : 100MΩ Min
 Operation Temperature : -40°C to +105°C

Contact Material : Phosphor Bronze
 Contact plating : Au Or Sn over Ni
 Insulator Material : PBT +30%G.F UL94V-0



RoHS Compliant

TOLERANCES ARE

MORETHANALL
PCB CONNECTORS
Cable ASSEMBLIES

煜倫股份有限公司

www.morethanall.com

DRAWING BY CY

CHECKED BY GENIUS

UNIT / mm SCALE 1 : 1

DATE

SIZE A4

X. ± 0.20
 .X ± 0.15
 .XX ± 0.10
 .XXX ±
 ANG ± 2°

PJECTION

照片框

ORDER INFORMATION

HAP-C2-xxx-LF
 SERIES | LEADFREE
 006-080WAY
 TWO TYPE

DESCRIPTION:

Flat Cable

UL FLAT RIBBON WIRE

UL Style:2678
 Rated temperature:-40°C+105°C
 Rated voltage:150Volts
 Passess VW-1 vertical flame test

CABLE PHYSICAL PROPERTISE:

After seven days air oven at 136°C
 Average tensile strength:1500 lbs/inch²
 Percent of original:70% at least
 Average elongation:200%
 Percent of original:65% at least

CONDUCTOR

AWG size:30AWG
 Nummber of strands in each conductor:
 7/0.10mmTinned copper
 Cross section area:98 Circular mil

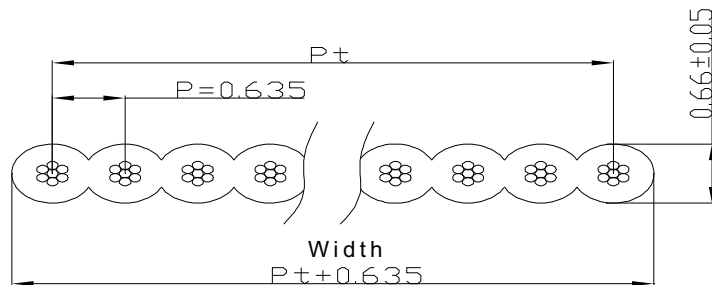
ELECTRONIC CHARACTERISTICS

Spark test:1500Volts
 Dielectric strength test:Minimum1500Volts in 1 minute
 Conductor resistance:Maximum377 Ω/KM
 Insulation resistance: Maximum100MΩ/KM
 Capacity:80pF/M
 Inductance:2.0μH/M
 Impadance:105 Ω
 Propagation delay time:5.6ns/m

INSULATION

Material of insulation:Polyvinl chloride(PVC)Gray
 Insulation thickness average:7mil
 Minimum insulation thickness:6mil

CONSTRUCTION DRAWING



CONSTRUCTION TABLE

Coded No	Number Of Cores	Size of conductor		Thickness (mm±0.06)	Width	Allowable
		(AWG)	Composition (mm±0.005)			Error(mm)
	06	30	7/0.10MM	0.66	3.81MM	±0.1
	10	30	7/0.10MM	0.66	6.35MM	±0.15
	12	30	7/0.10MM	0.66	7.62MM	±0.15
	14	30	7/0.10MM	0.66	8.89MM	±0.15
	16	30	7/0.10MM	0.66	10.16MM	±0.15
	20	30	7/0.10MM	0.66	12.70MM	±0.15
	24	30	7/0.10MM	0.66	15.24MM	±0.15
	26	30	7/0.10MM	0.66	16.51MM	±0.15
	30	30	7/0.10MM	0.66	19.05MM	±0.20
	34	30	7/0.10MM	0.66	21.59MM	±0.20
	40	30	7/0.10MM	0.66	25.40MM	±0.20
	50	30	7/0.10MM	0.66	31.75MM	±0.20

MARKING:

AWM 2678 E350147 VW-1 105°C 150V 30AWG 元 AWM I A FT1 105°C 150V -LF-