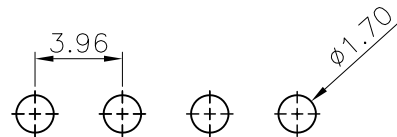


Recommended P.C.Board Layout  
(Tolerance:  $\pm 0.05$ )



Specifications

Current Rating: 7.9Amp  
 Insulation Resistance: 1000M $\Omega$  Min.  
 Dielectric Withstanding: 1000V AC  
 Contact Resistance: 20m $\Omega$  Max.  
 Operating Temperature: -40 $^{\circ}$ C to +105 $^{\circ}$ C  
 Materials

Contact Material: Brass

Insulation Material: High Temperature Thermoplastic, UL 94V-0 LCP or the equivalent material

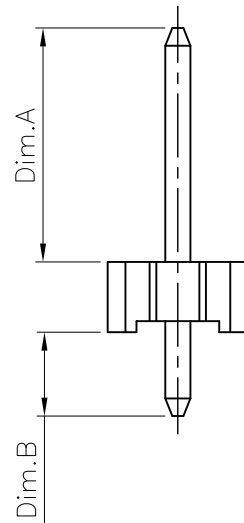
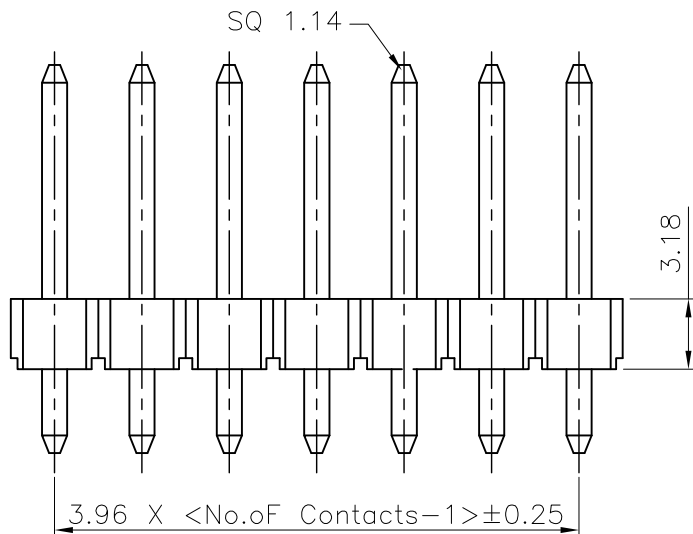


TABLE 1

Serial No.	Dimension Information	
	Dim.A	Dim.B
01	4.55	2.55
02	11.45	4.45
03	12.70	4.45
04	20.55	4.00
05	3.80	12.10
06	10.60	3.80
07	15.30	3.50
08	11.00	3.40
09	11.00	3.00
10	13.85	3.60

Serial No.	Dimension Information	
	Dim.A	Dim.B
11	8.80	3.80
50	6.85	2.60
12	11.45	3.20
13	10.15	3.20
14	17.30	3.50
15	8.00	3.00
16	11.45	3.20
23	22.60	4.36

Void No.3,6pins

Ordering Information

RoHS Compliant

TOLERANCES ARE

**MORETHANALL**  
PCB CONNECTORS  
Cable ASSEMBLIES

DRAWING BY CY

X.  $\pm 0.30$

CHECKED BY GENIUS

.X  $\pm 0.25$

UNIT / mm

SCALE 1 : 1

.XX  $\pm 0.15$

.XXX  $\pm 0.10$

DATE

ANG  $\pm$

SIZE A4

P PROJECTION

照片框

ORDER INFORMATION

H39-D31xxxxyy-1Xxx-LF

SERIES | LEADFREE  
 1X01:01 WAY  
 1X24:24 WAY  
 DIP 180 $^{\circ}$   
 BASE 3.18mm 025:DIP 2.55mm  
 045:CONTACT 4.55mm 043:DIP 4.36mm  
 226:CONTACT 22.6mm

DESCRIPTION: 3.96 PITCH POWER MALE DIP TYPE CONNECTOR

煜倫股份有限公司

www.morethanall.com