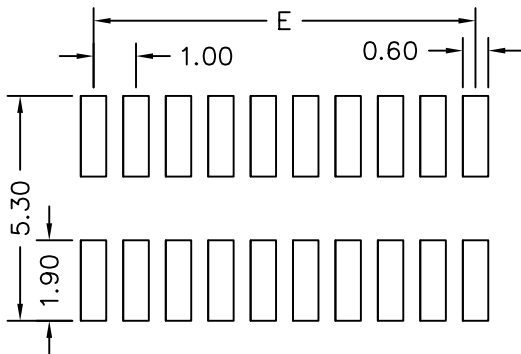
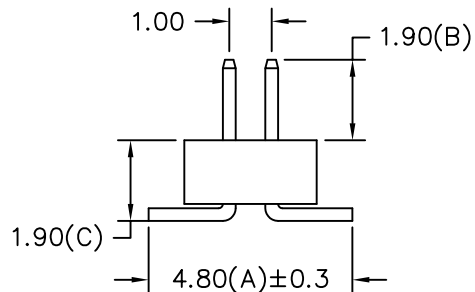
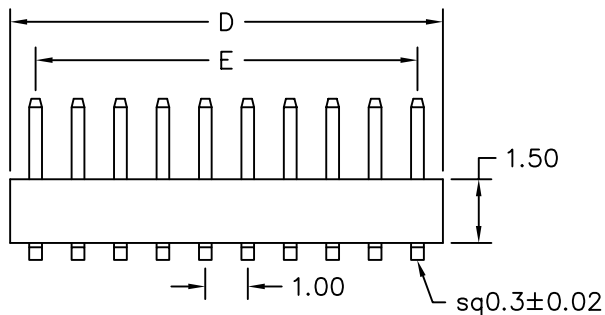
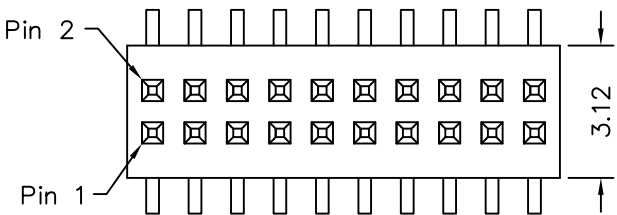


1 2 3 4 5 6 7 8 9 0



Recommended P.C.B Layout

MATERIAL

Insulator : NYLON 9T
Contact Pin : Brass

SPECIFICATION

Current Rate : 1 AMP
Insulation Resistance : 5000MΩMin. at DC 500V
Contact Resistance : 20mΩMax. at DC 100mA
Dielectric Voltage : AC 500V for one minute
Operation Temperature : -40°C to + 105°C

H10-V19X-2Xxx-LF
LEADFREE
2X05:10WAY
2X50:100WAY

RoHS Compliant

POLES	DIM D	DIM E	POLES	DIM D	DIM E	POLES	DIM D	DIM E
			19	19.20	18.00	35	35.20	34.00
			20	20.20	19.00	36	36.20	35.00
5	5.20	4.00	21	21.20	20.00	37	37.20	36.00
6	6.20	5.00	22	22.20	21.00	38	38.20	37.00
7	7.20	6.00	23	23.20	22.00	39	39.20	38.00
8	8.20	7.00	24	24.20	23.00	40	40.20	39.00
9	9.20	8.00	25	25.20	24.00	41	41.20	40.00
10	10.20	9.00	26	26.20	25.00	42	42.20	41.00
11	11.20	10.00	27	27.20	26.00	43	43.20	42.00
12	12.20	11.00	28	28.20	27.00	44	44.20	43.00
13	13.20	12.00	29	29.20	28.00	45	45.20	44.00
14	14.20	13.00	30	30.20	29.00	46	46.20	45.00
15	15.20	14.00	31	31.20	30.00	47	47.20	46.00
16	16.20	15.00	32	32.20	31.00	48	48.20	47.00
17	17.20	16.00	33	33.20	32.00	49	49.20	48.00
18	18.20	17.00	34	34.20	33.00	50	50.20	49.00



PART NO. H10-V19X-2Xxx

DWG NO. H10-V19X-2Xxx

FILE NO.

UNIT / mm

SCALE 1:1

CHECKED BY CY

DRAWING BY

PROJECTION

TOLERANCES ARE

.X ± 0.2
.XX ±
.XXX ±
AWG

DESCRIPTION:

PIN HEADER 1.0*1.0mm
SMT S/T TYPE, DUAL ROWS
HEIGHT=1.5mm

AREA

REVISIONS

HK

DATE

焯倫股份有限公司