

Recommended P.C.B Layout

MATERIAL

Insulator: NY6T UL94-V0 $\triangle B$

Contact Pin : Brass

SPECIFICATION

Current Rate : 1 AMP

Insulation Resistance : 5000M Ω Min. at DC 500V

Contact Resistance : 15m Ω Max.

Dielectric Voltage : AC 500V for one minute

$\triangle B$ Operation Temperature : -40°C to + 105°C

RoHS Compliant

TOLERANCES ARE

MORETHANALL
PCB CONNECTORS
Cable ASSEMBLIES

DRAWING BY CY

CHECKED BY GENIUS

UNIT / mm

SCALE 1 : 1

DATE

SIZE A4

X, \pm
.X \pm 0.30
.XX \pm 0.20
.XXX \pm
ANG \pm 3°

PJECTION

照片框

ORDER INFORMATION

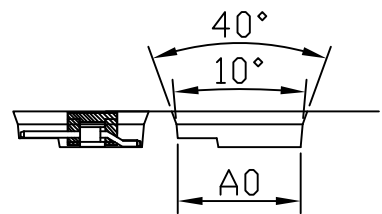
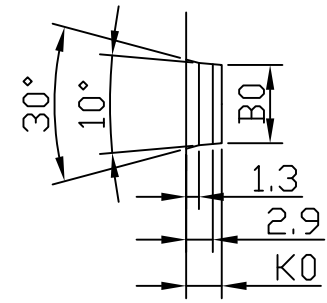
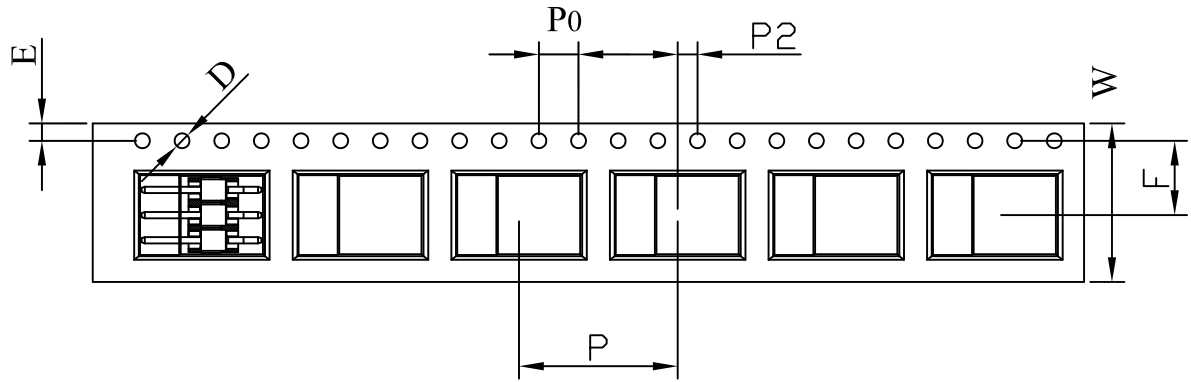
H-WXCR-1X03-LF
SERIES REEL 03 WAY LEADFREE
CAP NON POST
90°SMT

DESCRIPTION: PIN HEADER 2.54*2.54mm SINGLE ROW, HORIZONTAL PIN CAP

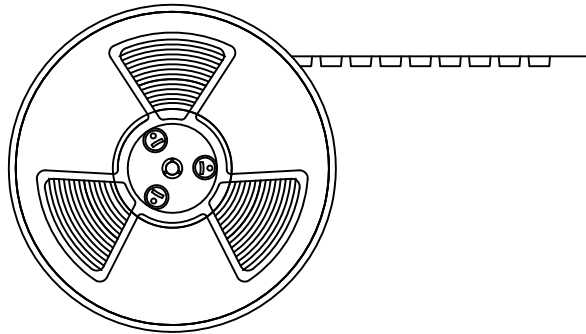
煜倫股份有限公司

www.morethanall.com

ITEM	W	A0	B0	K0	K1	P	E	F	D	D1	P0	P2
DIM	16 ^{+0.3} _{-0.3}	12.4 ^{+0.1} _{-0.1}	7.9 ^{+0.1} _{-0.1}	3.8 ^{+0.1} _{-0.1}	2.9 ^{+0.1} _{-0.1}	16 ^{+0.1} _{-0.1}	1.75 ^{+0.1} _{-0.1}	7.5 ^{+0.1} _{-0.1}	1.5 ^{+0.1} _{-0.0}	1.5 ^{+0.25} _{-0.0}	4.0 ^{+0.1} _{-0.1}	2.0 ^{+0.1} _{-0.1}



出料方向
→



NOTE:

- 1.10 sprocket hole pitch cumulative tolerance±0.2
- 2.Carrier camber is 1mm in 100mm
- 3.A0 and B0 measured on a plane 0.3mm above the bottom of the pocket
- 4.K0 measured from a plane on the inside bottom of the pocket to the top surface of the carrier
- 5.All dimensions meet EIA-481-2 requirements
6. 22" 1R= 51M 3000PCS 17M 1000PCS

RoHS Compliant

TOLERANCES ARE



DRAWING BY CY

CHECKED BY GENIUS

UNIT / mm SCALE 1 : 1

DATE

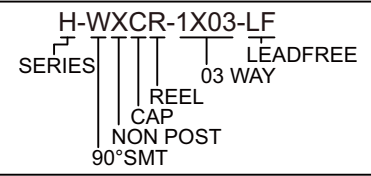
SIZE A4

X, ±
.X ± 0.30
.XX ± 0.20
.XXX ±
ANG ± 3°

P PROJECTION

照片框

ORDER INFORMATION



DESCRIPTION: PIN HEADER 2.54*2.54mm SINGLE ROW, HORIZONTAL PIN CAP

煜倫股份有限公司

www.morethanall.com