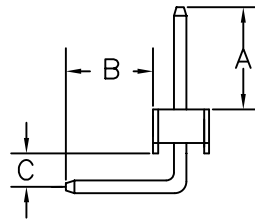
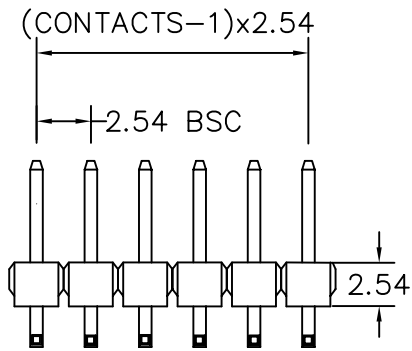


CONTACTS	1X12
1X2	1X13
1X3	1X14
1X4	1X15
1X5	1X16
1X6	1X17
1X7	1X18
1X8	1X19
1X9	1X20
1X10	1X21
1X11	1X22

CONTACTS	1X33
1X23	1X34
1X24	1X35
1X25	1X36
1X26	1X37
1X27	1X38
1X28	1X39
1X29	1X40
1X30	
1X31	
1X32	



A: 3.00 mm B: 3.60 mm C: 4.00 mm

MATERIAL

HOUSING : THERMOPLASTIC UL94V-0

CONTACT : COPPER ALLOYS

SPECIFICATION

CURRENT: 3A

OPERATING TEMPERATURE: -55°C TO +105°C

CONTACT RESISTANCE : 20 MILLIOHMS MAX

INSULATION RESISTANCE : 1000 MEGAOHMS MIN

WITHSTANDING VOLTAGE: AC 1000V RMS

H-RLC30-1Xxx-LF  
LEADFREE

RoHS Compliant

**MORETHANALL**  
CONNECTORS  
ASSEMBLIES

PART NO. H-RLC30-1Xxx

DWG NO. H-RLC30-1Xxx

FILE NO.

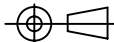
UNIT / mm

SCALE 1:1

CHECKED BY CY

DRAWING BY

PROJECTION



TOLERANCES ARE

.X ± 0.2  
.XX ±  
.XXX ±  
AWG

DESCRIPTION:

AREA

REVISIONS

HK

DATE

煜倫股份有限公司