

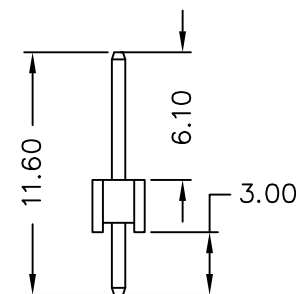
Recommended P.C.B Layout

MATERIAL

Insulator: NY6T UL94-V0
Contact Pin : Brass

SPECIFICATION

Current Rate : 8 AMP PER PIN(20AWG)
Insulation Resistance : 5000MΩMin. at DC 500V
Contact Resistance : 20mΩMax. at DC 100mA
Dielectric Voltage : AC 500V for one minute
Operation Temperature : -40°C to + 105°C



RoHS Compliant

TOLERANCES ARE



煜倫股份有限公司

www.morethanall.com

DRAWING BY CY

CHECKED BY GENIUS

UNIT / mm

SCALE 1:1

DATE

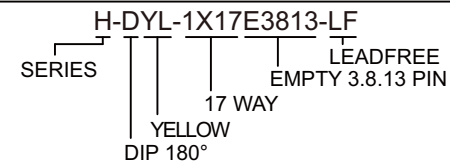
SIZE A4

X, ±
.X ± 0.30
.XX ± 0.20
.XXX ±
ANG ± 3°

P PROJECTION

照片框

ORDER INFORMATION



DESCRIPTION: PIN HEADER 2.54*2.54mm STRAIGHT TYPE, SINGLE ROW