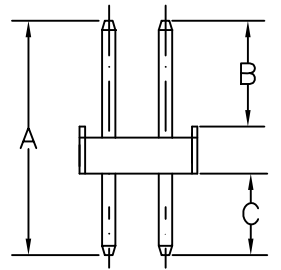
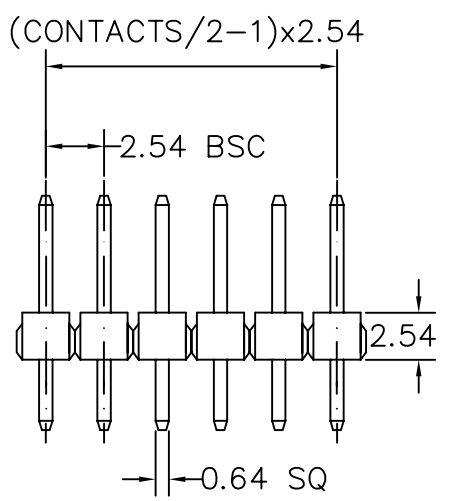


RECOMMENDED P.C.B LAYOUT

CONTACTS	2X21	2X11	2X31
2X2	2X22	2X12	2X32
2X3	2X23	2X13	2X33
2X4	2X24	2X14	2X34
2X5	2X25	2X15	2X35
2X6	2X26	2X16	2X36
2X7	2X27	2X17	2X37
2X8	2X28	2X18	2X38
2X9	2X29	2X19	2X39
2X10	2X30	2X20	2X40



A: 12.54 mm B: 4.00 mm C: 6.00 mm

H-D1256040-2Xxx-LF
LEADFREE

RoHS Compliant

MATERIAL
HOUSING : THERMOPLASTIC UL94V-0
CONTACT : COPPER ALLOYS

SPECIFICATION
CURRENT: 3A
OPERATING TEMPERATURE: -55°C TO +105°C
CONTACT RESISTANCE : 20 MILLIOHMS MAX
INSULATION RESISTANCE : 1000 MEGAOHMS MIN
WITHSTANDING VOLTAGE: AC 1000V RMS



PART NO. H-D1256040-2Xxx		CHECKED BY CY		TOLERANCES ARE .X ± 0.2 .XX ± .XXX ± AWG	DESCRIP TION:			
DWG NO. H-D1256040-2Xxx		DRAWING BY						
FILE NO.		PROJECTION		AREA	REVISIONS	HK	DATE	
UNIT / mm	SCALE 1:1							

煜倫股份有限公司