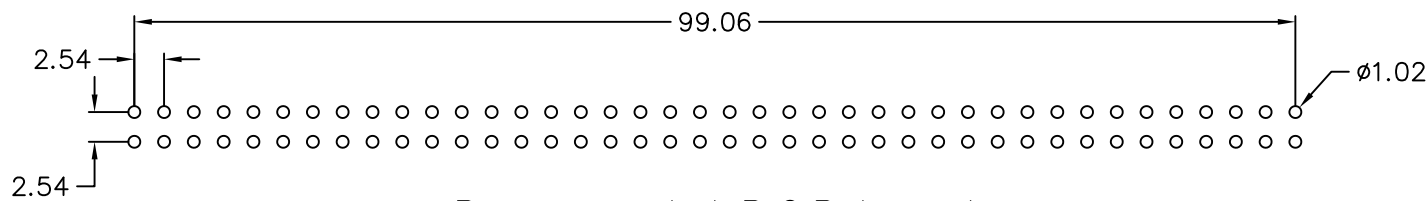
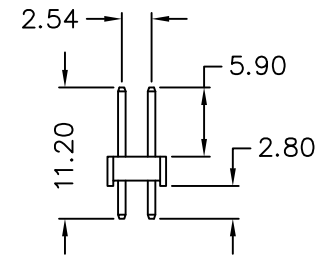
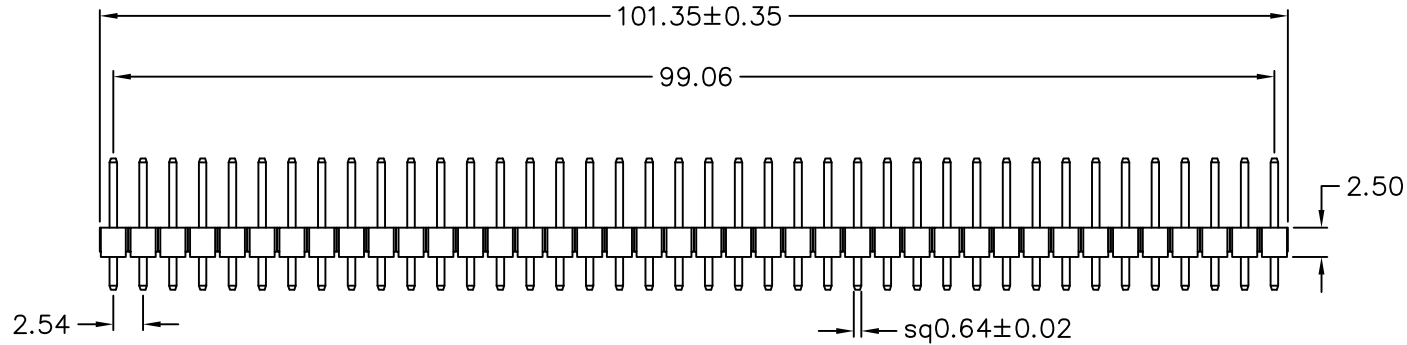


**MATERIAL**  
 Insulator : PBT+30%G.F UL94-V0  
 Contact Pin : Brass

**SPECIFICATION**  
 Current Rate : 3 AMP  
 Insulation Resistance : 5000MΩMin. at DC 500V  
 Contact Resistance : 20mΩMax. at DC 100mA  
 Dielectric Voltage : AC 500V for one minute  
 Operating Temperature: -40°C to +105°C



Recommended P.C.B Layout

RoHS Compliant

TOLERANCES ARE

**MORETHANALL**  
 PCB CONNECTORS  
 Cable ASSEMBLIES

DRAWING BY CY

X. ±

CHECKED BY GENIUS

.X ± 0.30

UNIT / mm

SCALE 1 : 1

.XX ± 0.20

DATE

.XXX ±

ANG ± 3°

SIZE A4

PPOJECTION

照片框

ORDER INFORMATION

H-D112059028-2X40-LF

SERIES | | | | LEADFREE

80 WAY

DIP 2.8mm

CONTACT 5.9mm

TOTAL 11.2mm

DIP180°

煜倫股份有限公司

www.morethanall.com

DESCRIPTION: PIN HEADER 2.54\*2.54mm STRAIGHT TYPE, DUAL ROWS